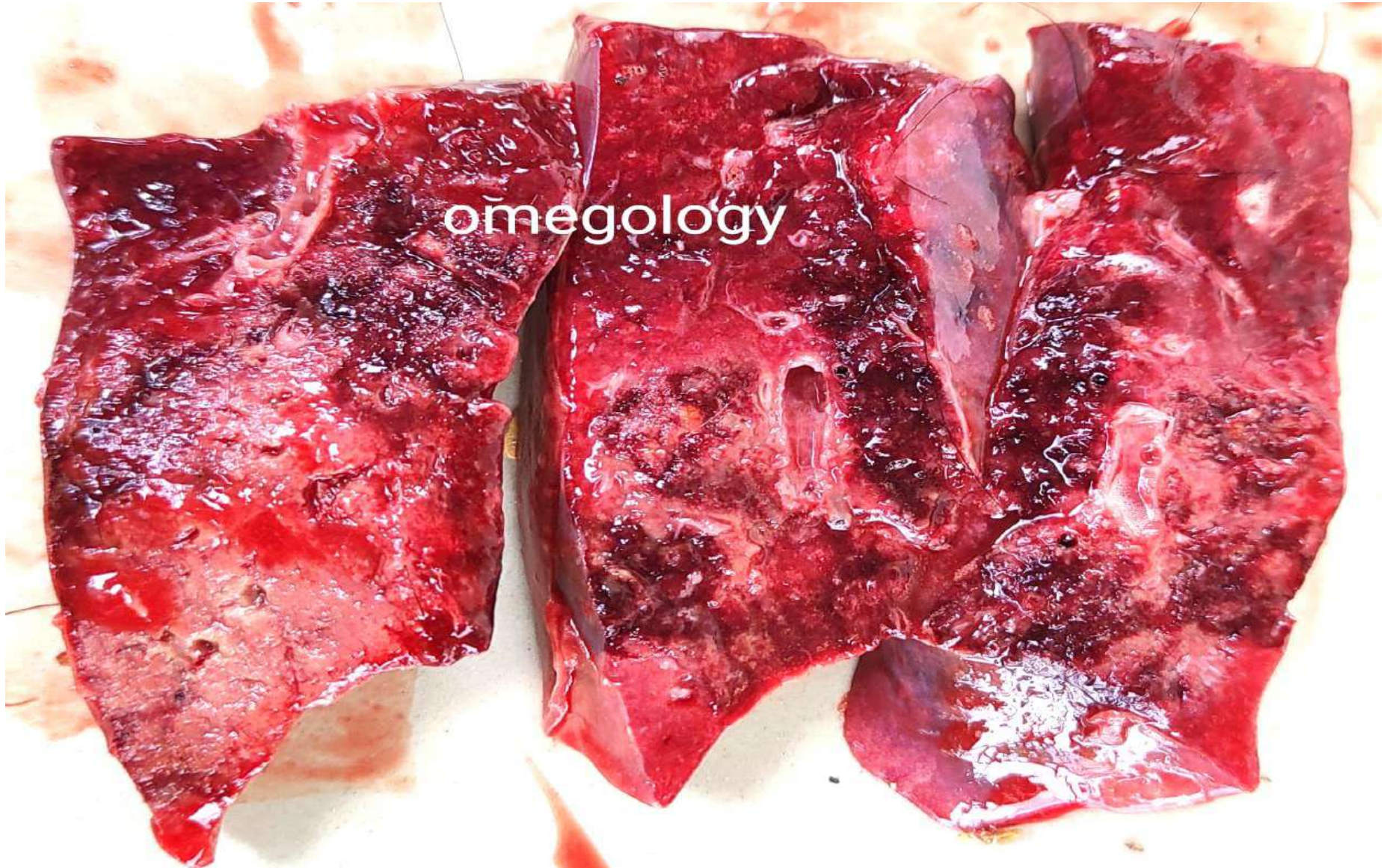
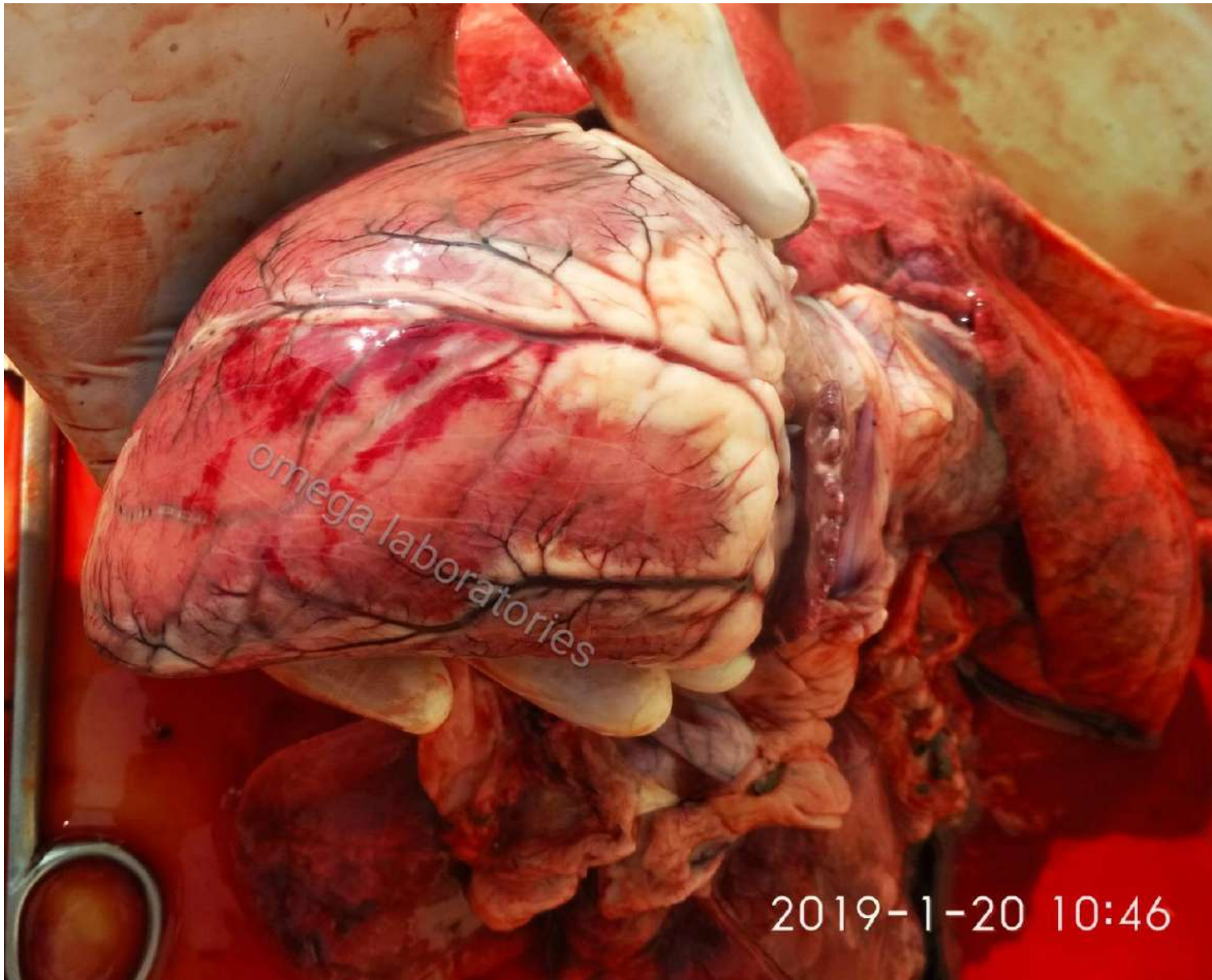


Consolidation



Heart hemorrhages



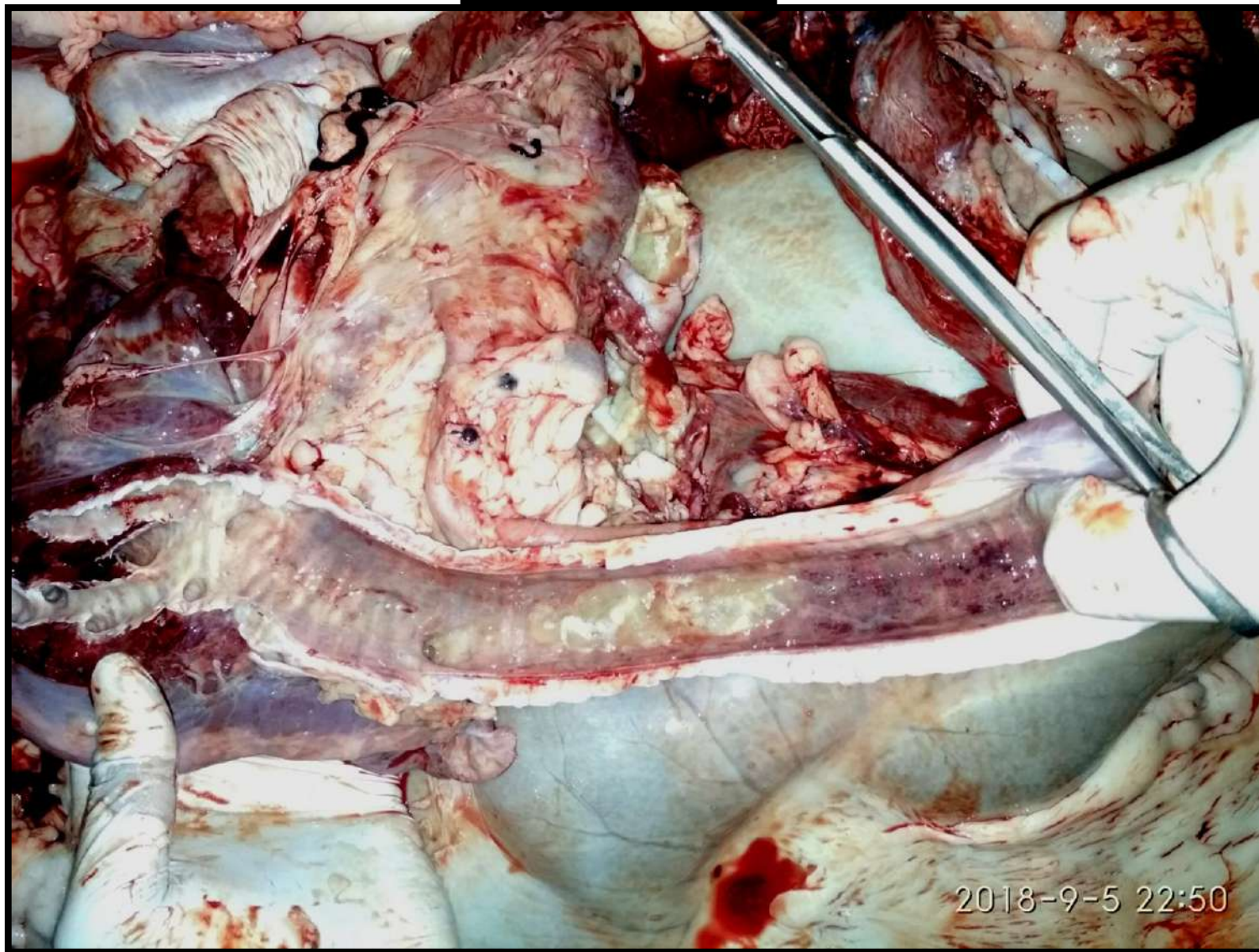
Pyothorax



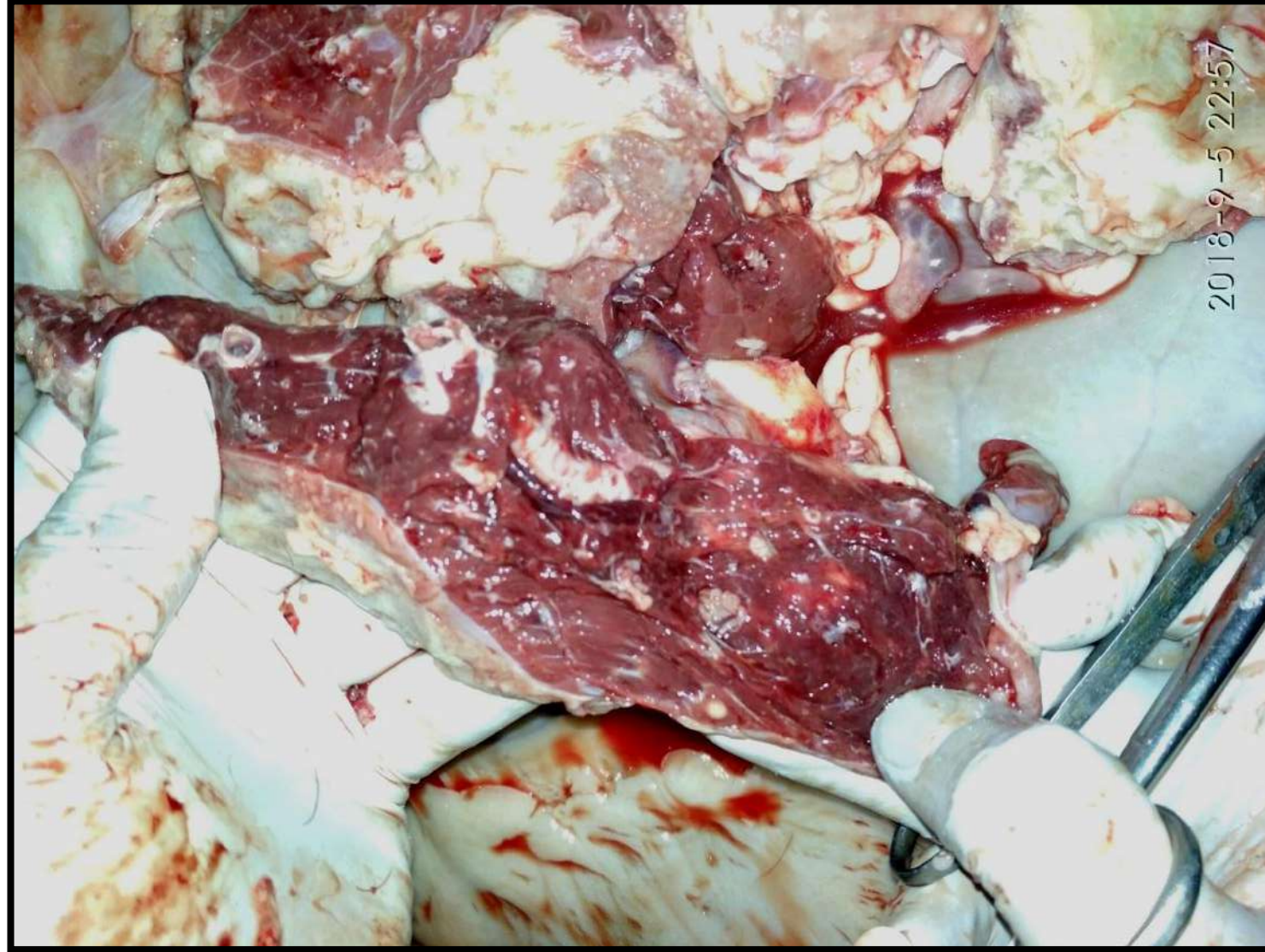
TB & mycoplasma



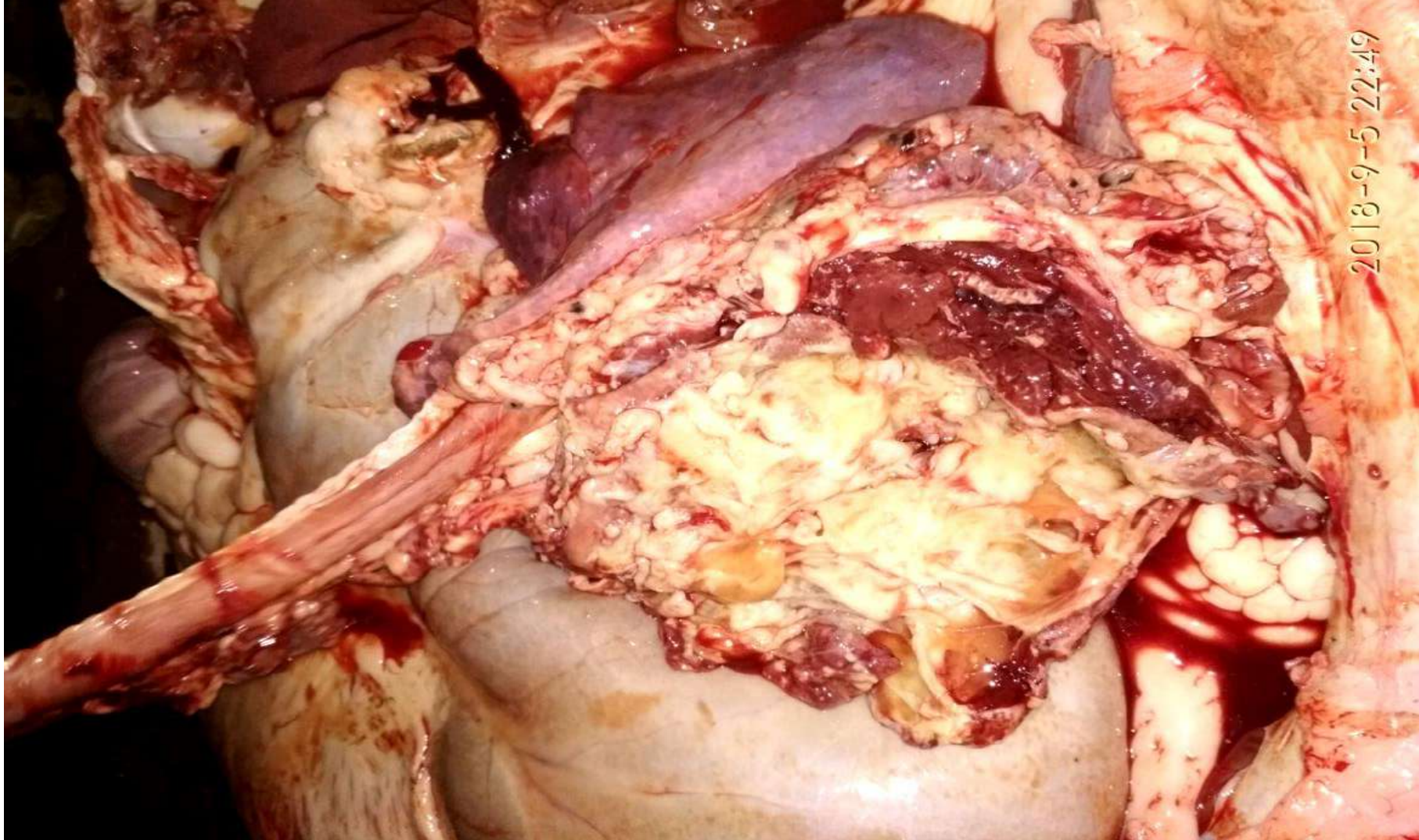
TB



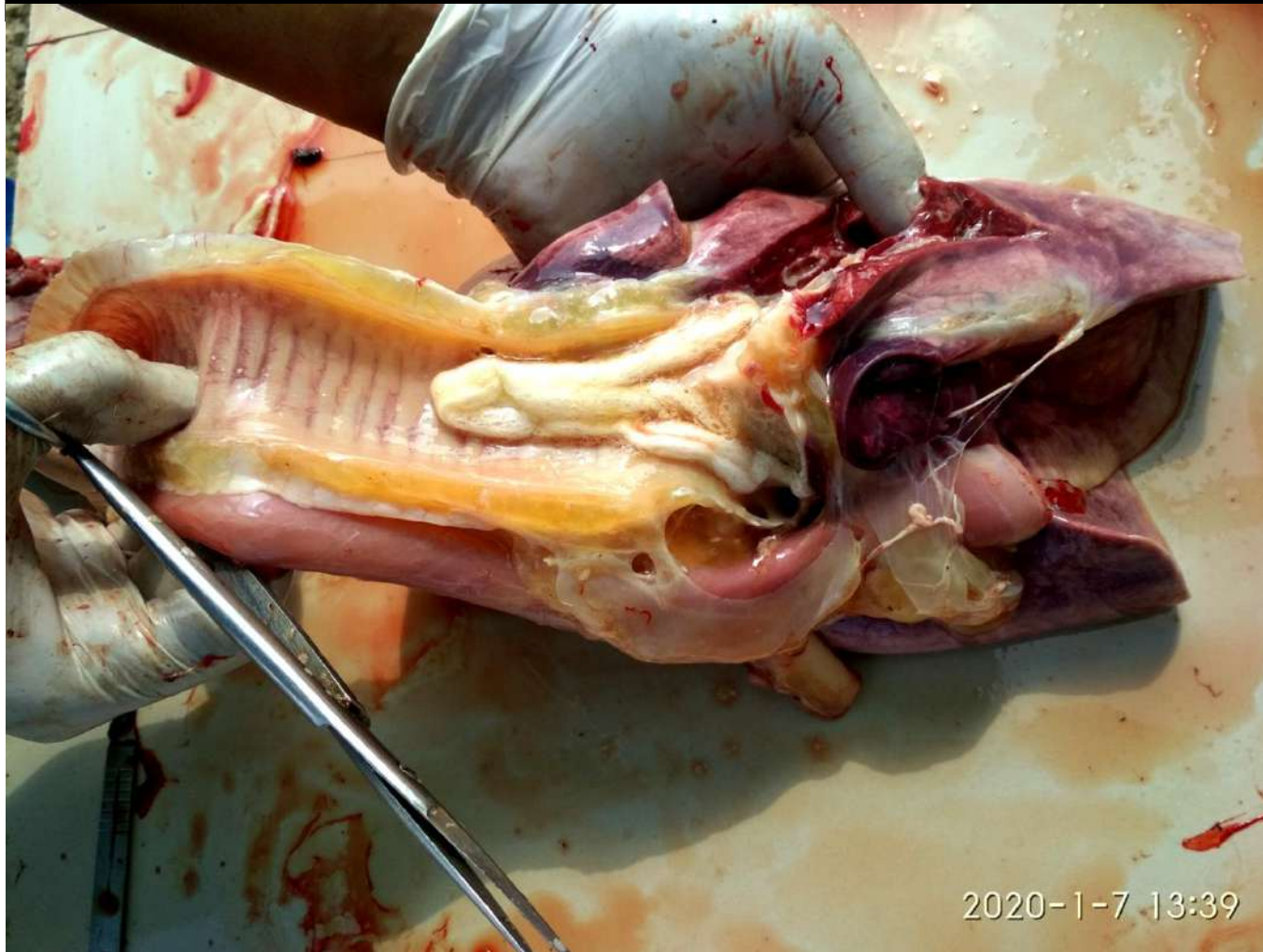
TB

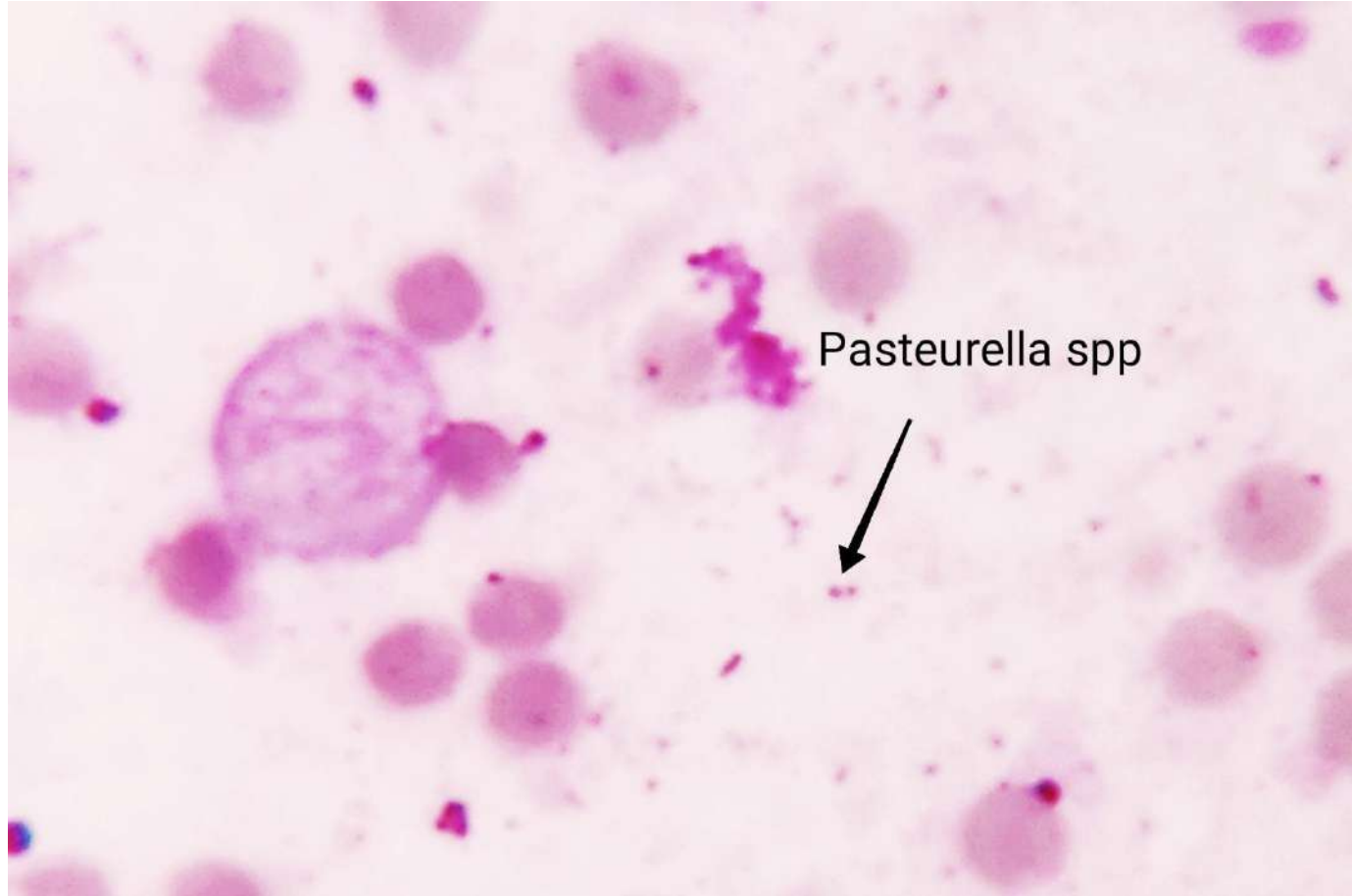


TB



Bronchopneumonia





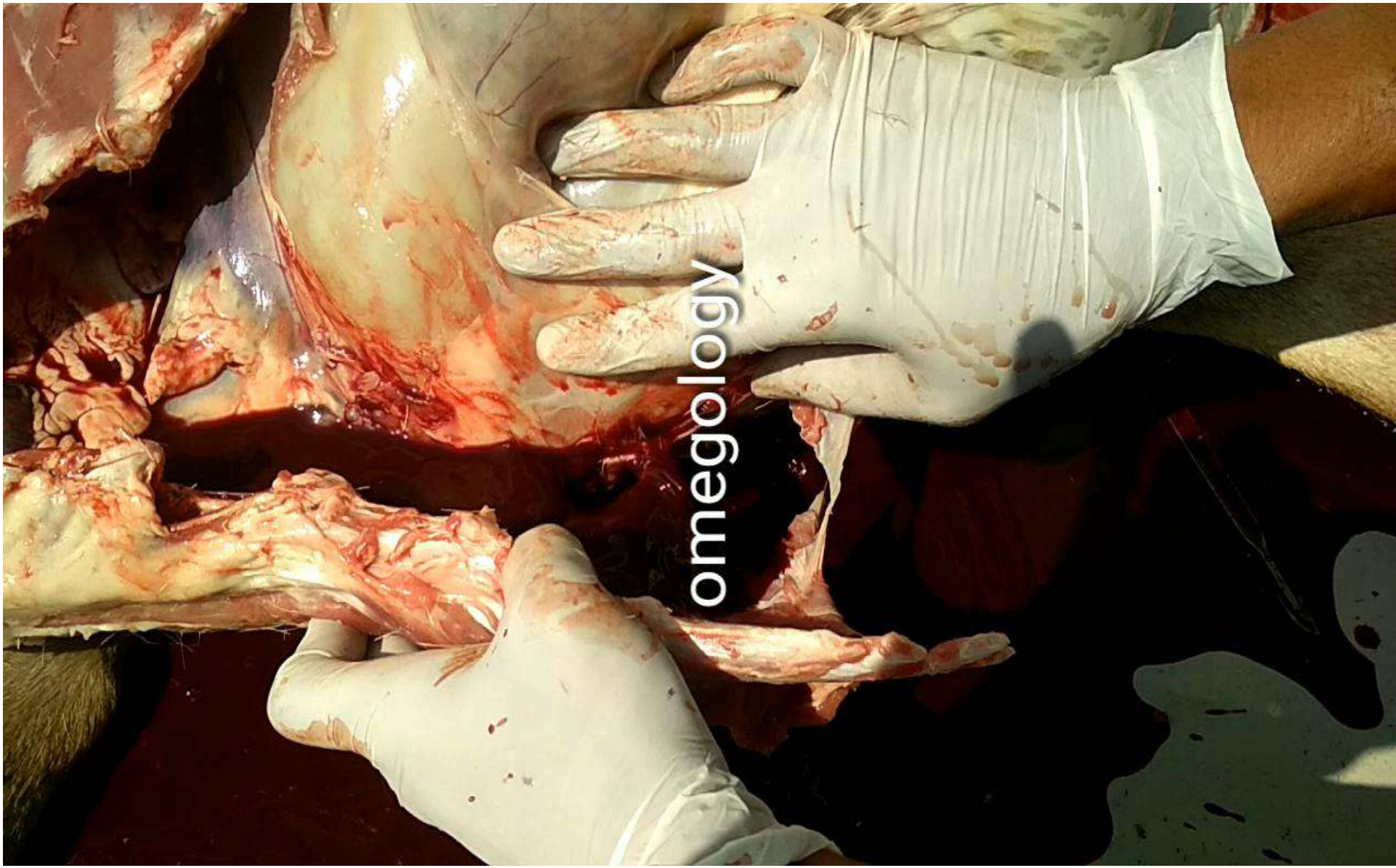
Pasteurella spp

Digestive problems

- Oral lesions – PPR, POX, FMD
- Ruminal problems- grain engorgement, toxic feed, plastic paper consumption, parasites etc.
- Abomasal problems- parasites, NSAIDs, theileria,
- Enteritis –
 - acute enteritis – virus, bacteria, toxins
 - chronic – parasites, coccidia, JD,

Sudden deaths

- Toxicity
- Severe septicemia and toxemia – HS, Anthrax
- Extensive internal bleeding – fasciola
- Electric shock , strangulation, drowning, drenching pneumonia, etc.



omegology

Fasciola



Anthrax



Toxicity



omega laboratories

2018-12-21 12:54

Toxicity



Toxicity



Toxicity



Grain engorgement



Viral

- PPR – coughing, diarrhoea, fever, salivation, bran like deposits in oral cavity, mortality
- FMD- sudden death in young and growing animals, blister formation in oral cavity and feet , secondary infection, septicemia
- Blue tongue – blue discoloration of tongue and oral mucosa, salivation, coughing, death, culicoides insect

- Pox – oral, skin, lungs, trachea small nodules and ulcerative wounds in mucosa, fever, wasting, death.
- Orf – pox like lesions around jaws, commissures
- Rabies – history of dog bites, nervous signs, death

PPR

Oral mucosa congestion, erosions and bran like deposits



PPR

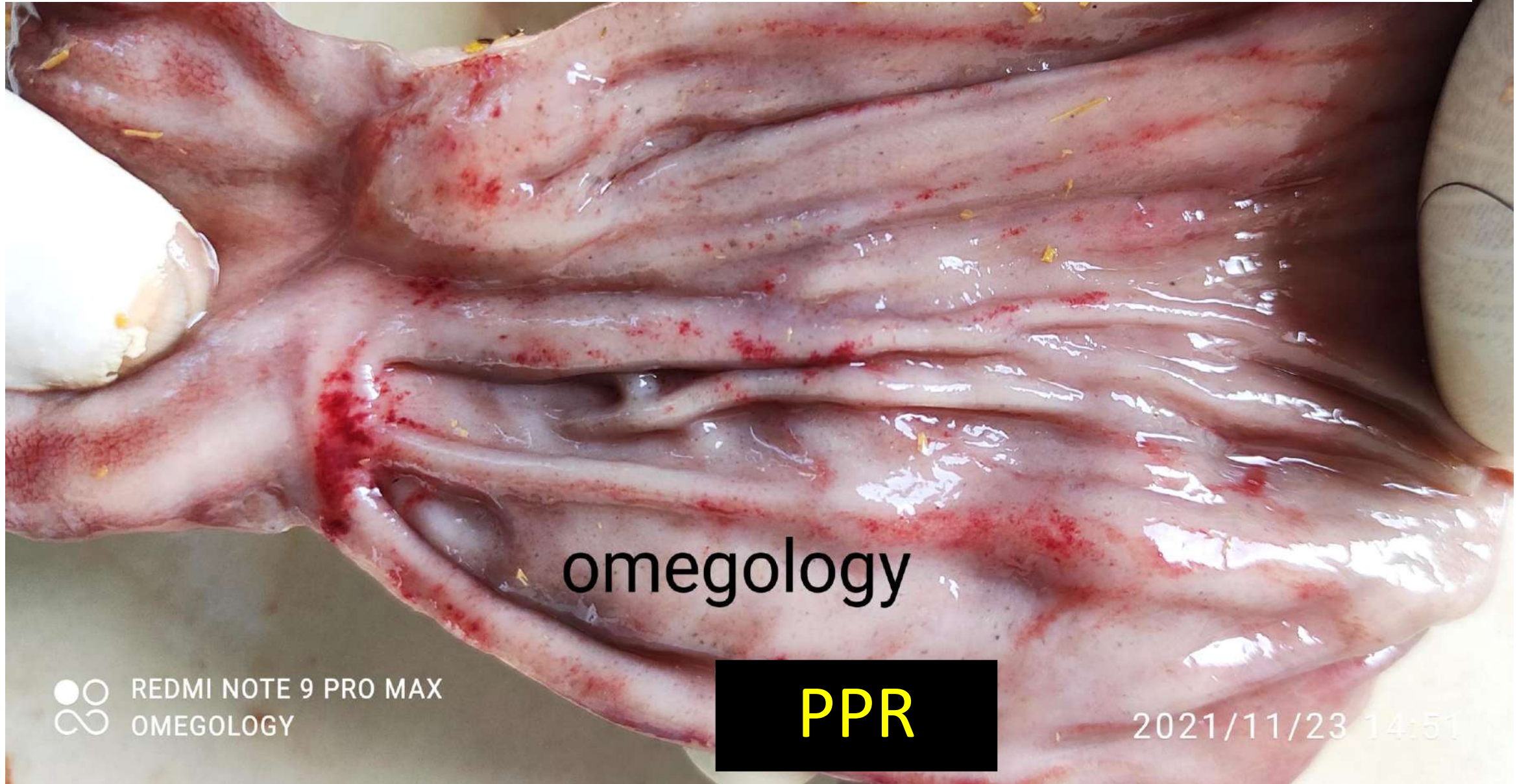
REDMI NOTE 9 PRO MAX
OMEGGLOGY

2021/11/23 15:01



PPR

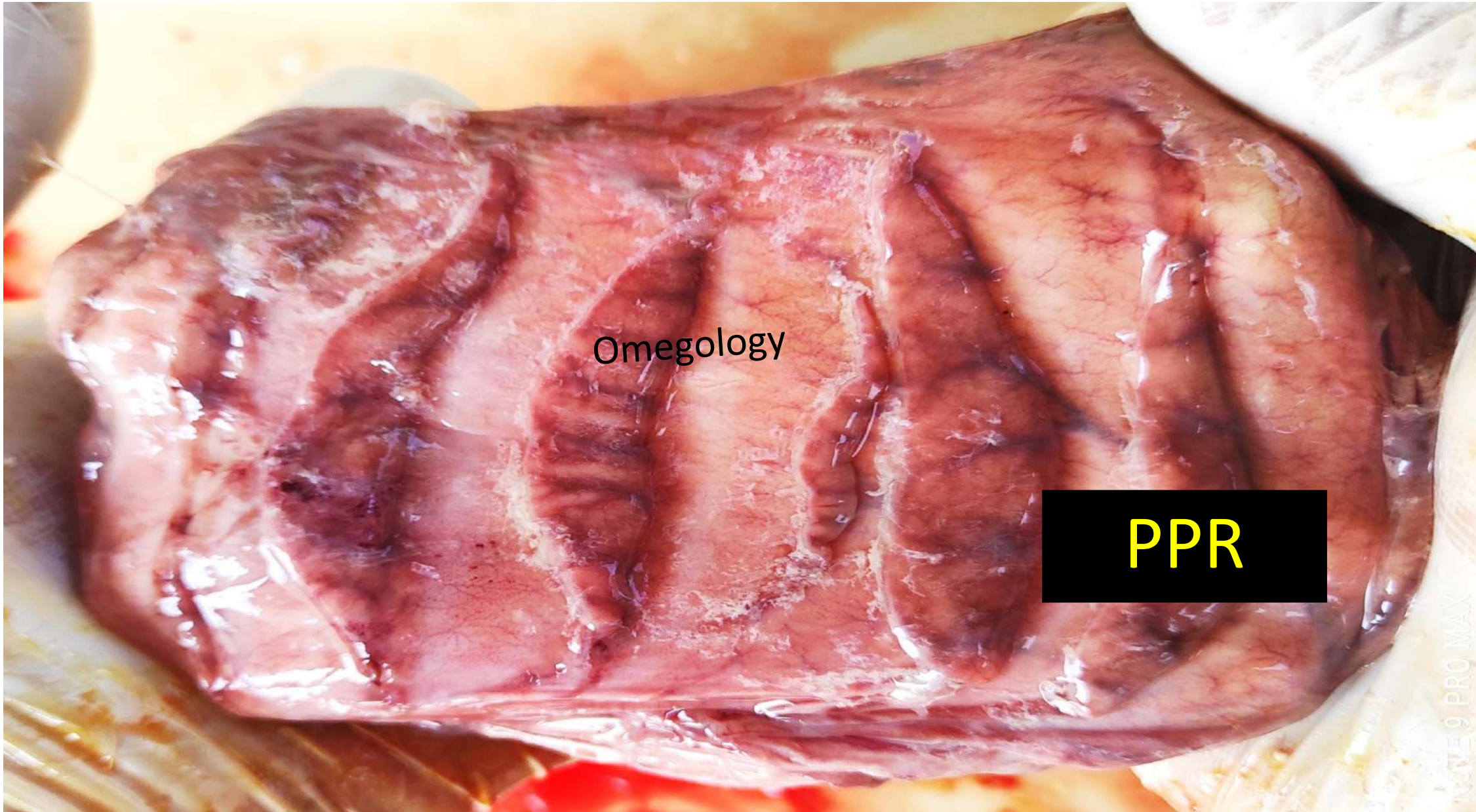
Congestion erosions , hemorrhages and inflammation of abomasal mucosa



omegology

PPR

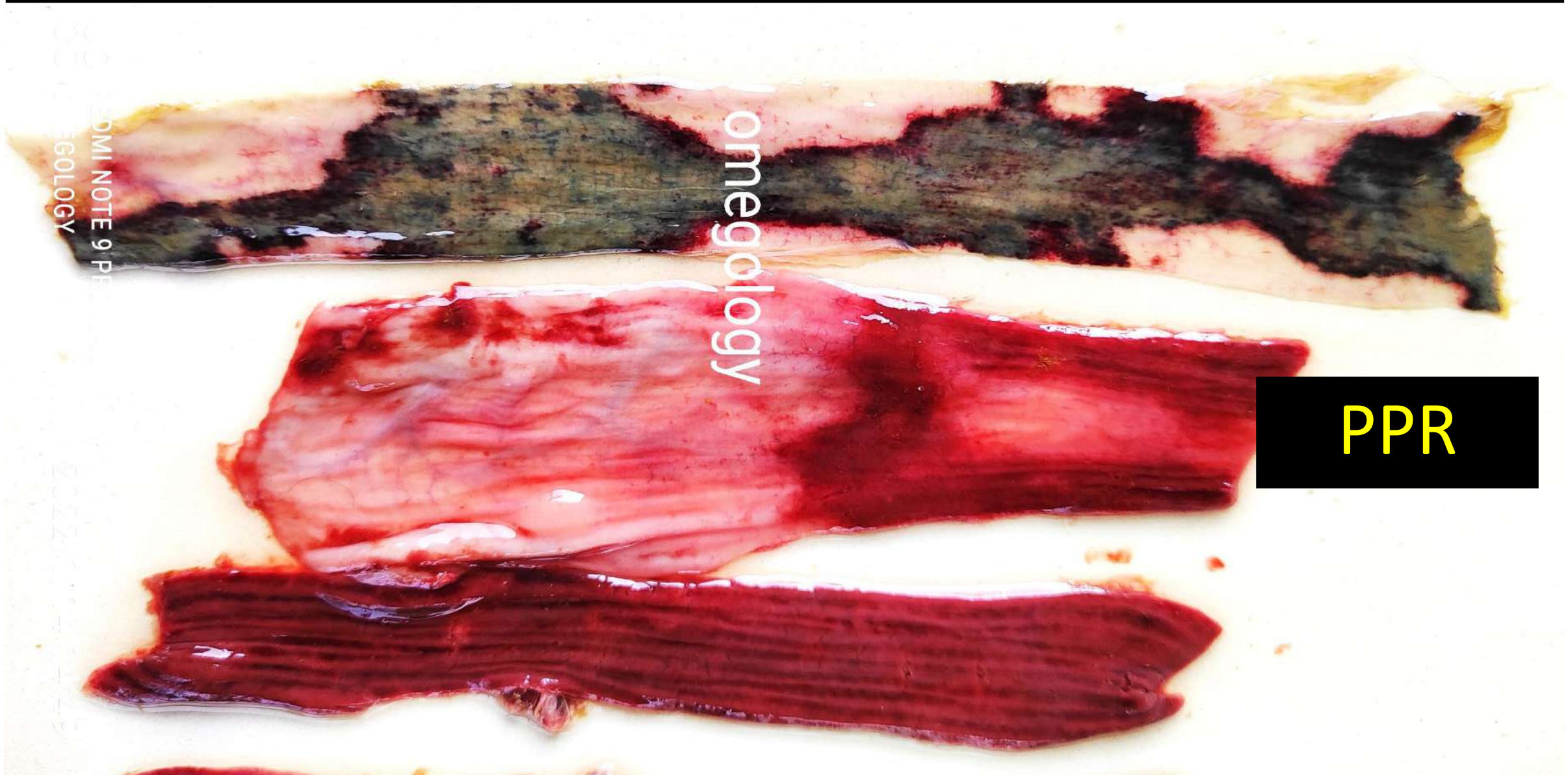
Congestion erosions , hemorrhages and inflammation of abomasal mucosa



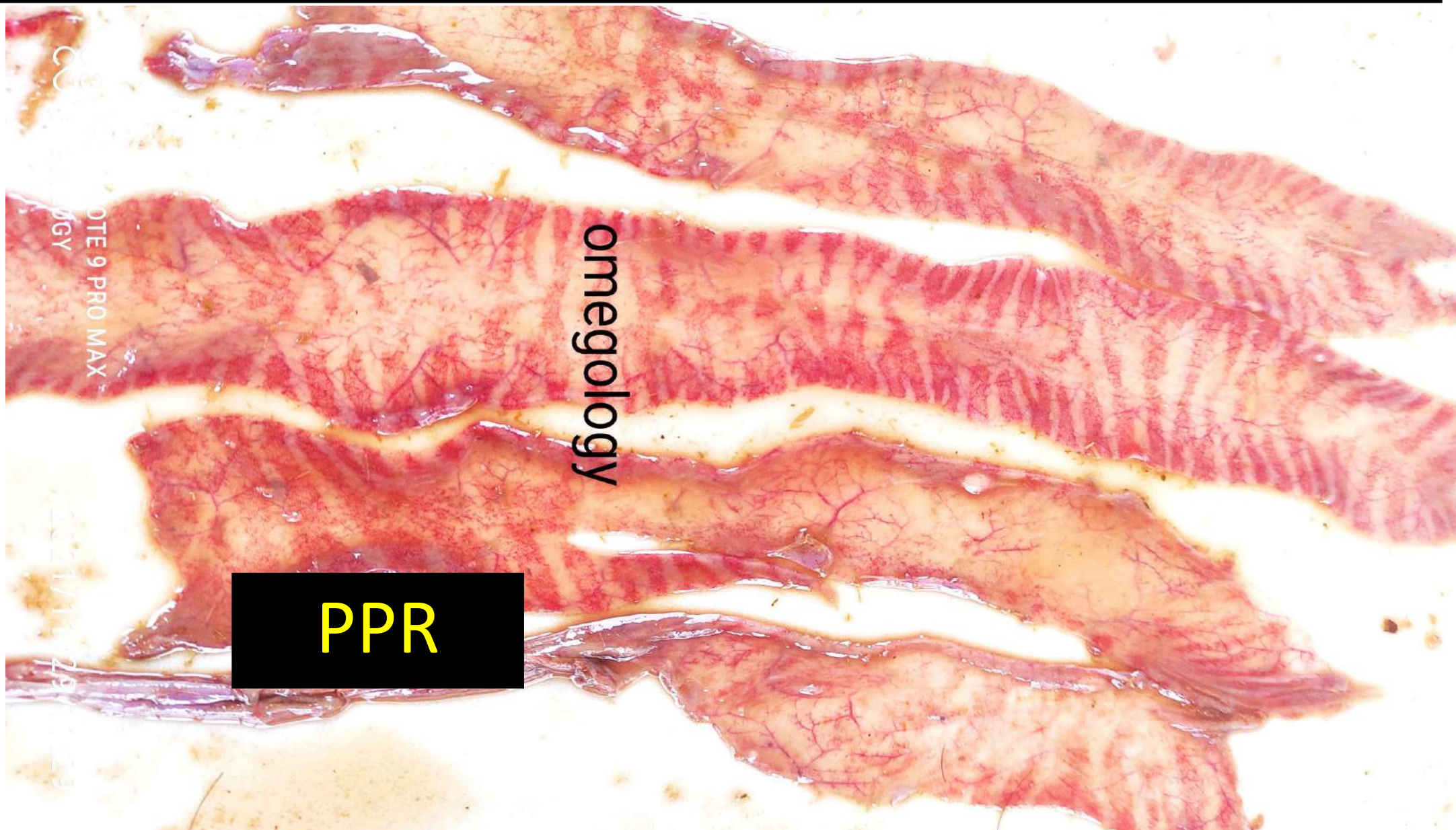
Omegology

PPR

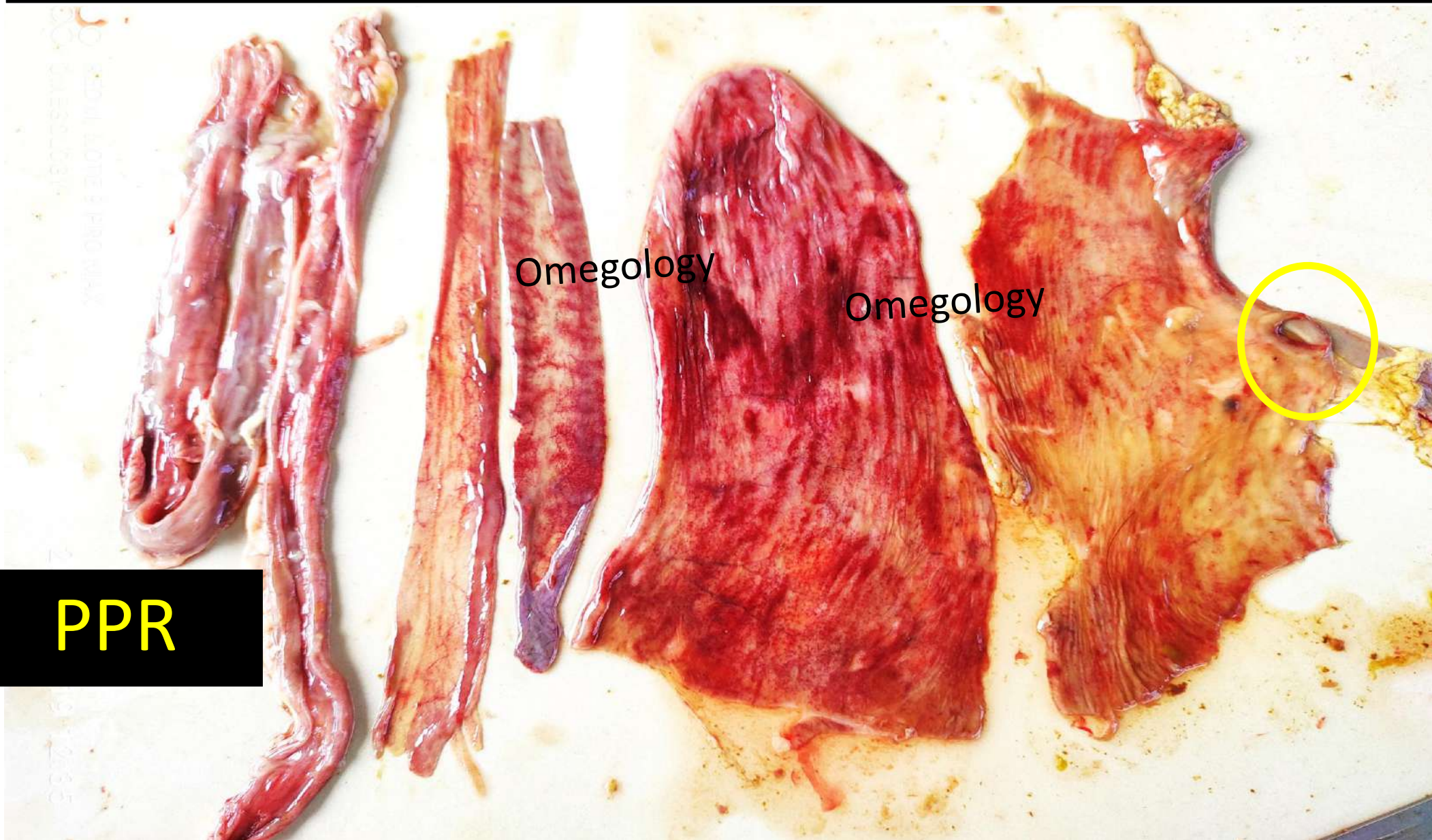
Congestion erosions , hemorrhages and inflammation of intestinal mucosa, necrosis and secondary bacterial complications with Zebra markings



Congestion erosions , hemorrhages and inflammation of intestinal mucosa – Zebra markings



Congestion erosions , hemorrhages and inflammation of intestinal mucosa – Zebra markings



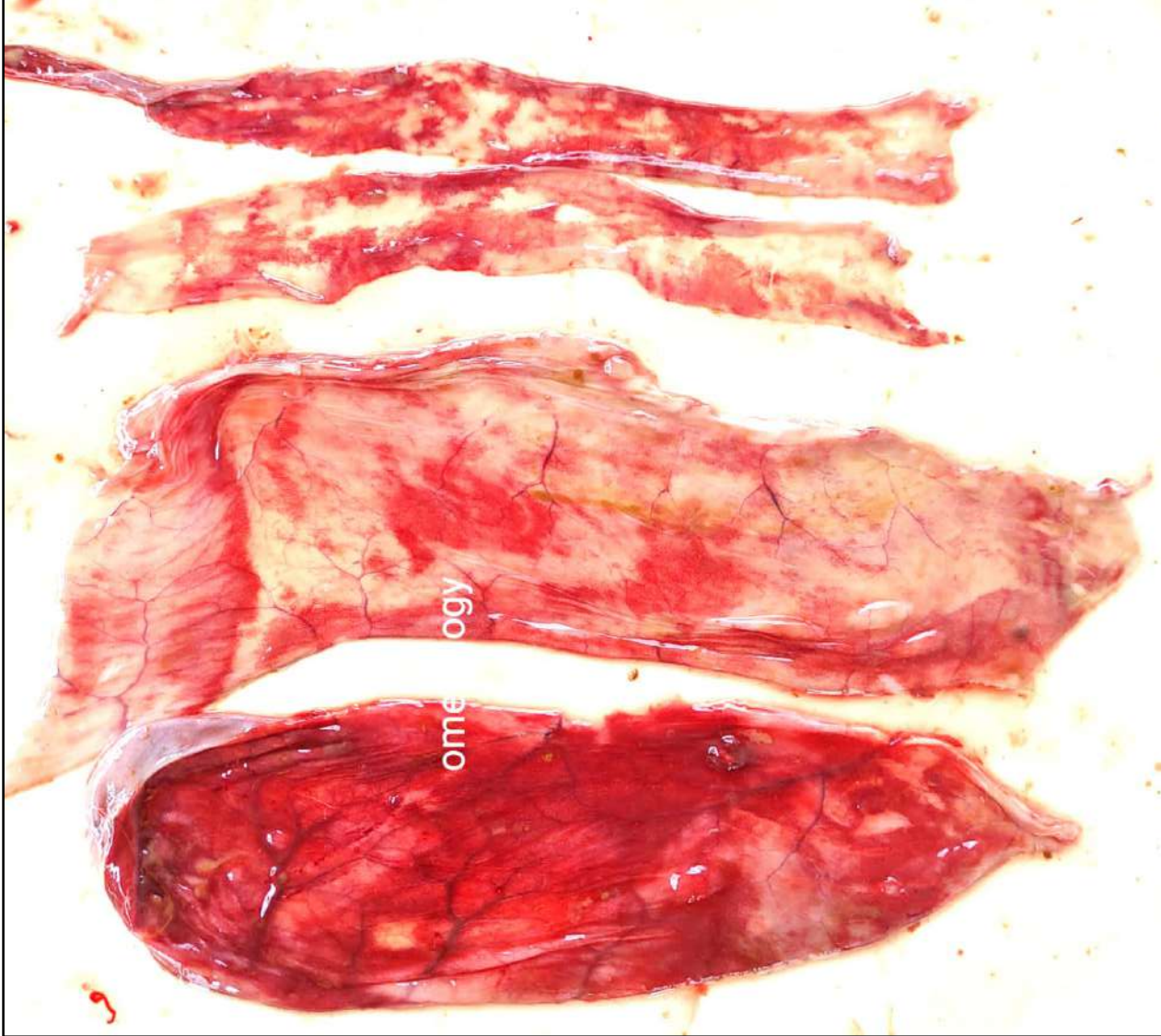
PPR

PPR

Hemorrhage Abomasum-goat



PPR



Hemorrhages ileocaecal junction

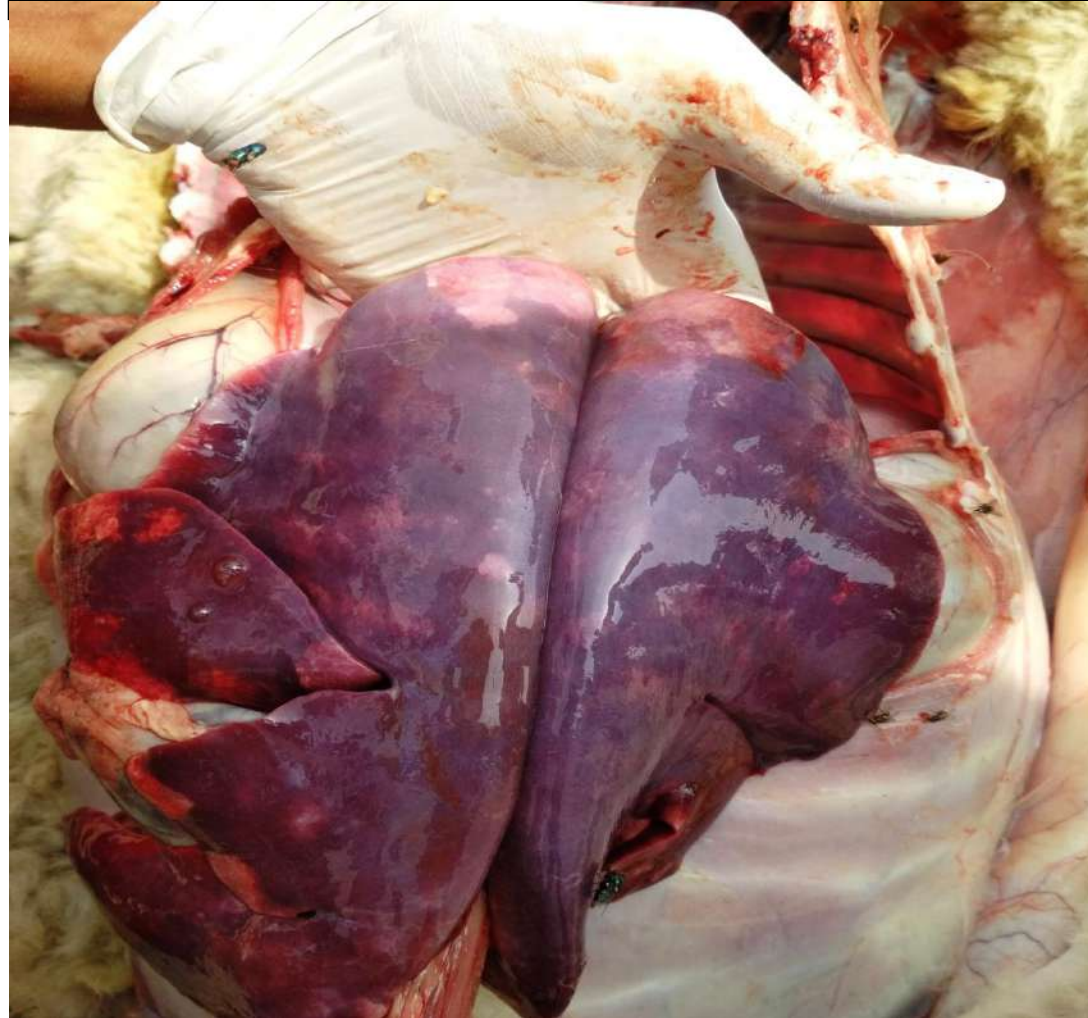


PPR - LN



2020-7-2 17:40

Blue tongue lungs



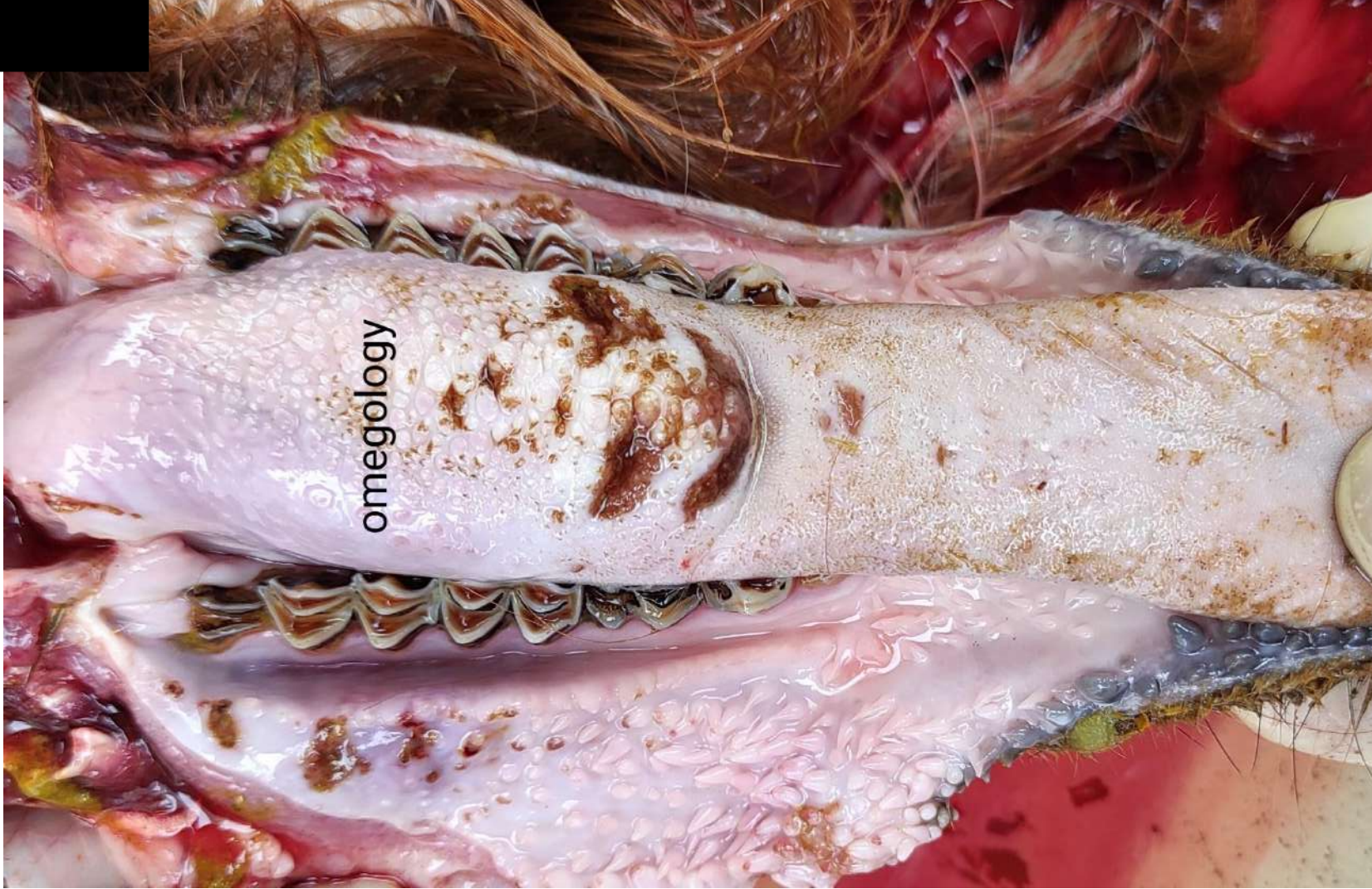
Blue tongue

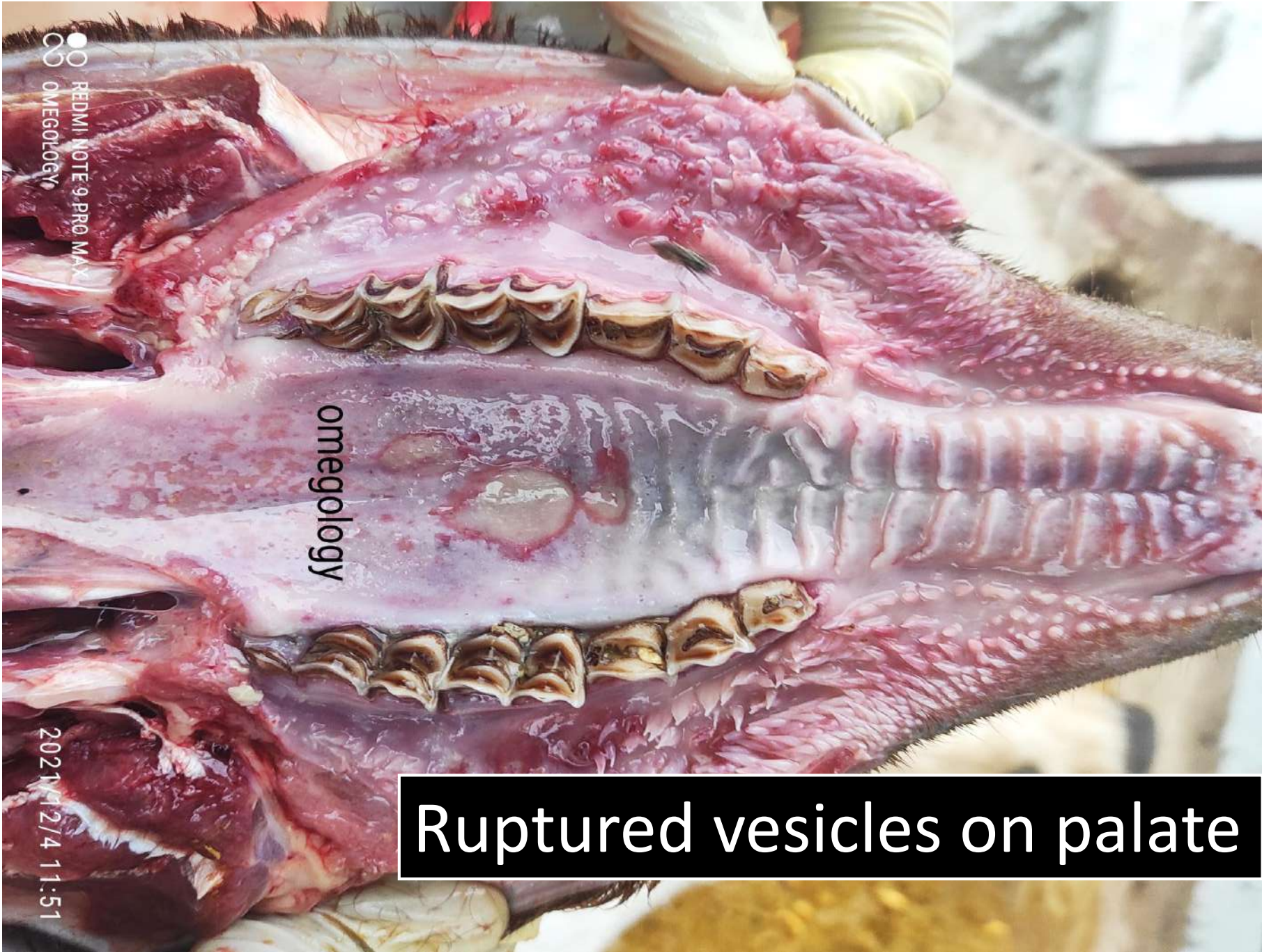


FMD



FMD





Ruptured vesicles on palate

REDMI NOTE 9 PRO MAX
OMEGOLGY

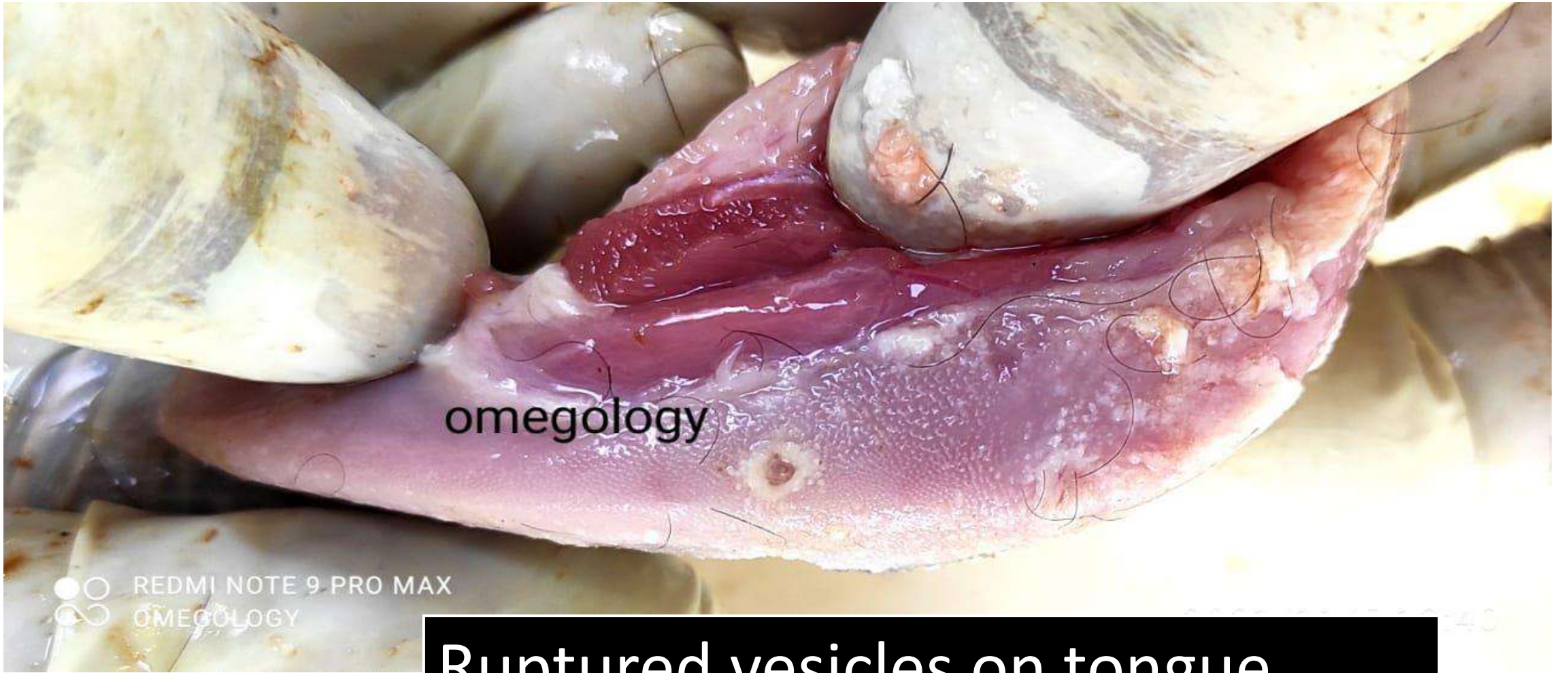
2023/12/4 11:51



omegology

Ruptured vesicles on tongue

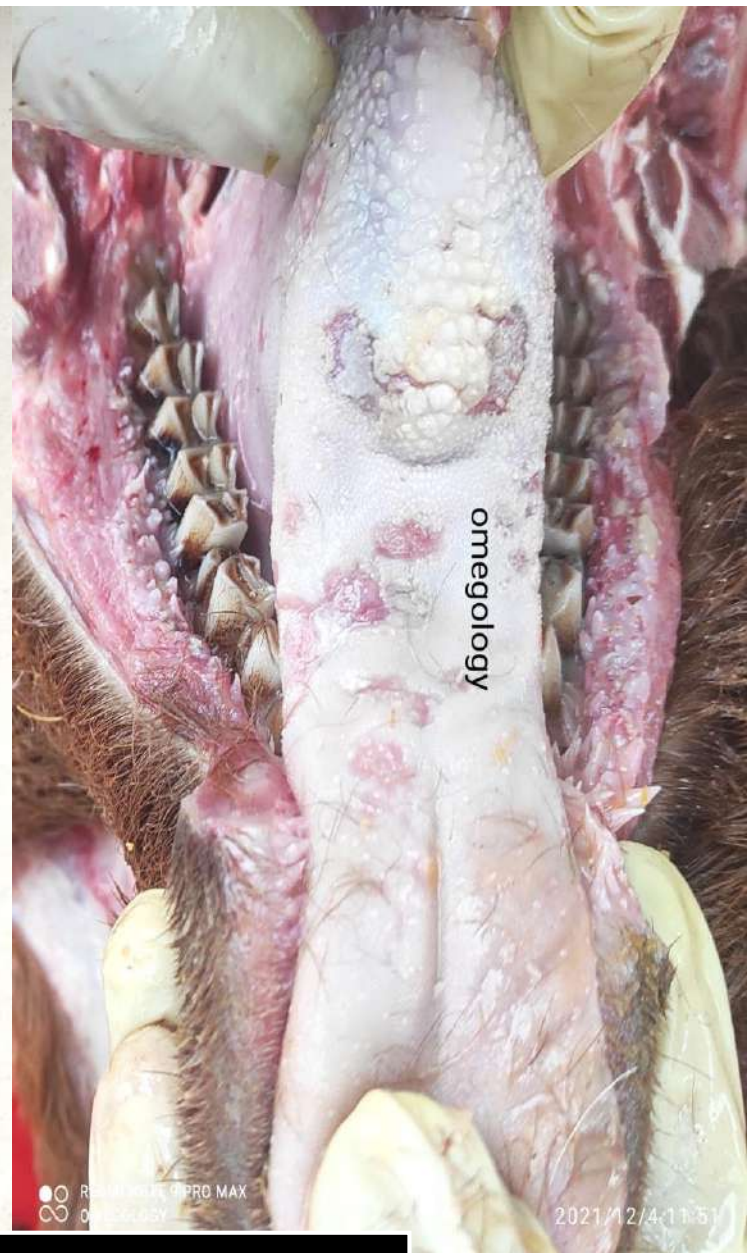
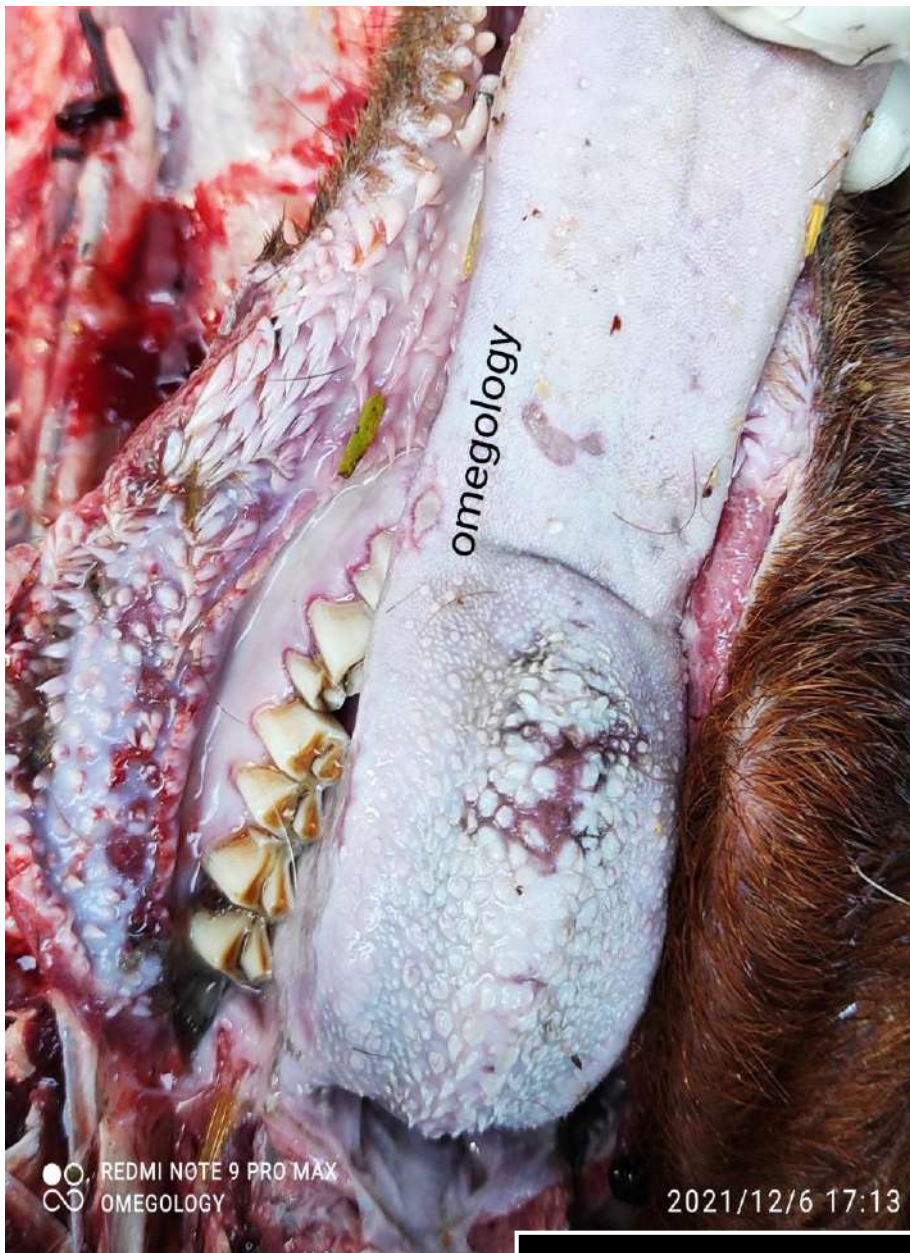
REDDMI NOTE 9 PRO MAX
OMEGALOGY / 12/4 11:55



omegology

● ○ REDMI NOTE 9 PRO MAX
○ ○ OMEGOLGY

Ruptured vesicles on tongue



Ruptured vesicles on tongue

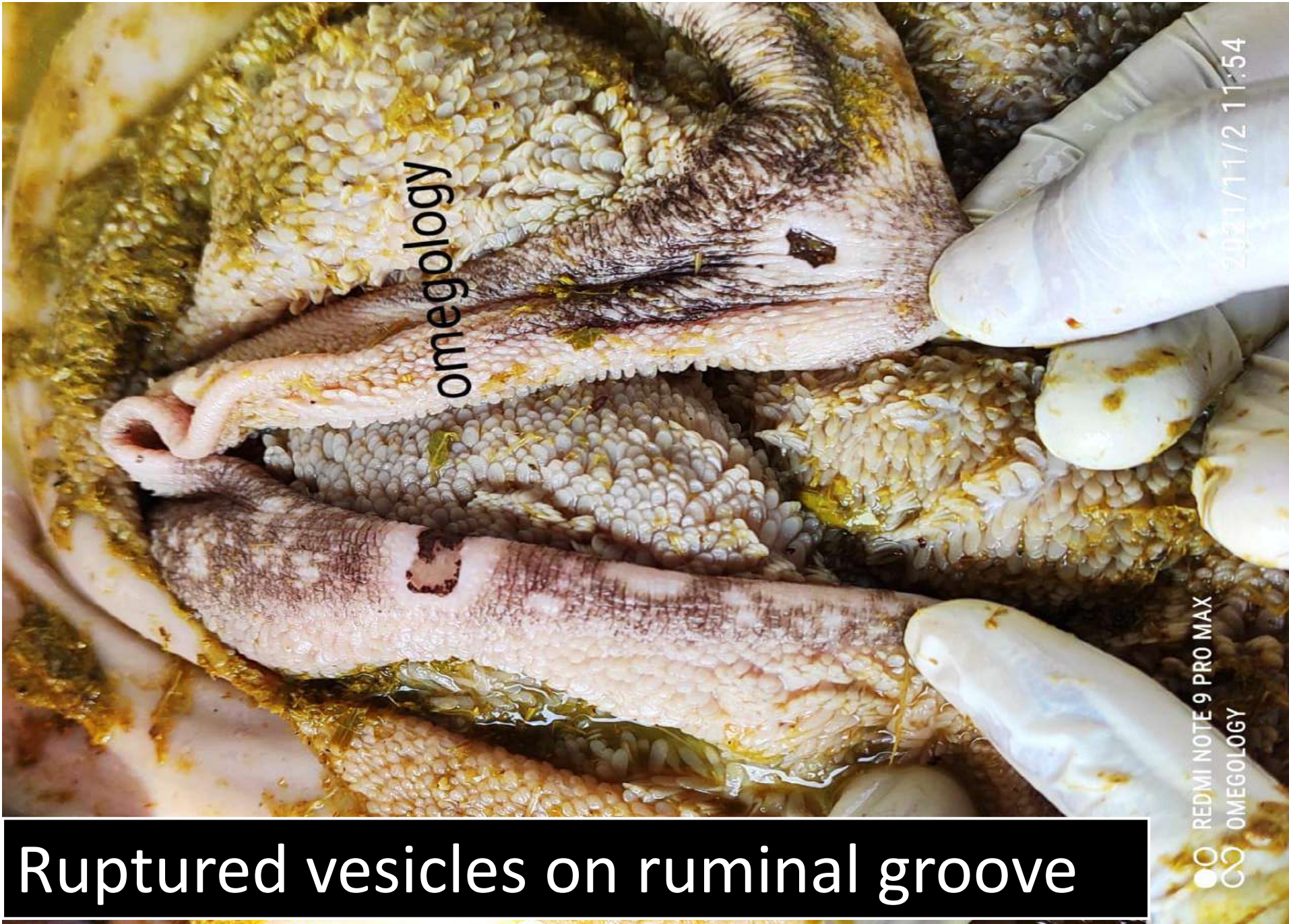
A close-up photograph of a horse's mouth, showing the tongue and teeth. The tongue is pink and has several small, red, ruptured vesicles (blisters) on its surface. The teeth are yellowish and appear worn. The horse's dark coat is visible around the edges of the mouth.

Ruptured vesicles on tongue

omegology



Ruptured vesicles on ruminal groove



omegology

2021/11/2 11:54

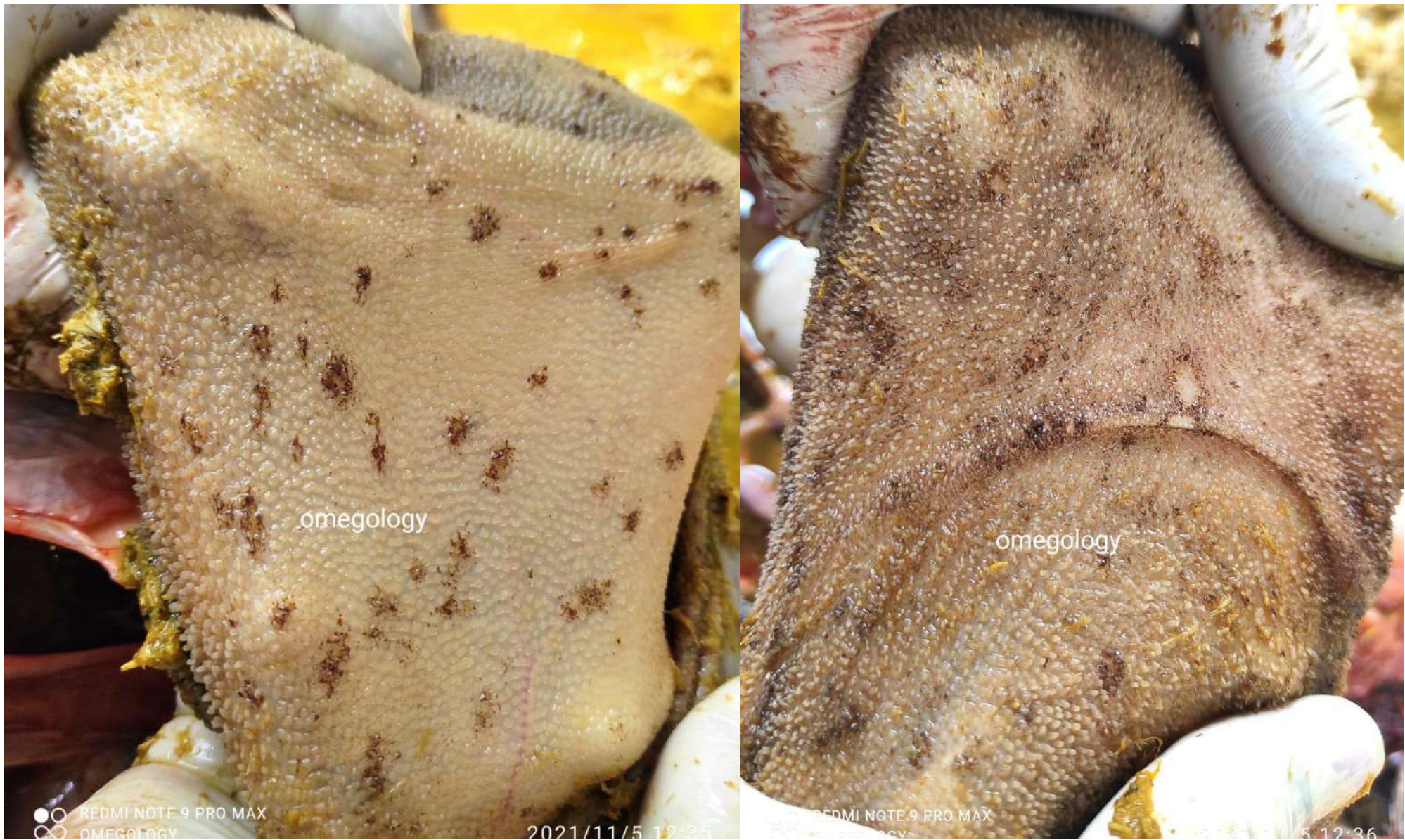
REDMI NOTE 9 PRO MAX

OMEGOLOGY

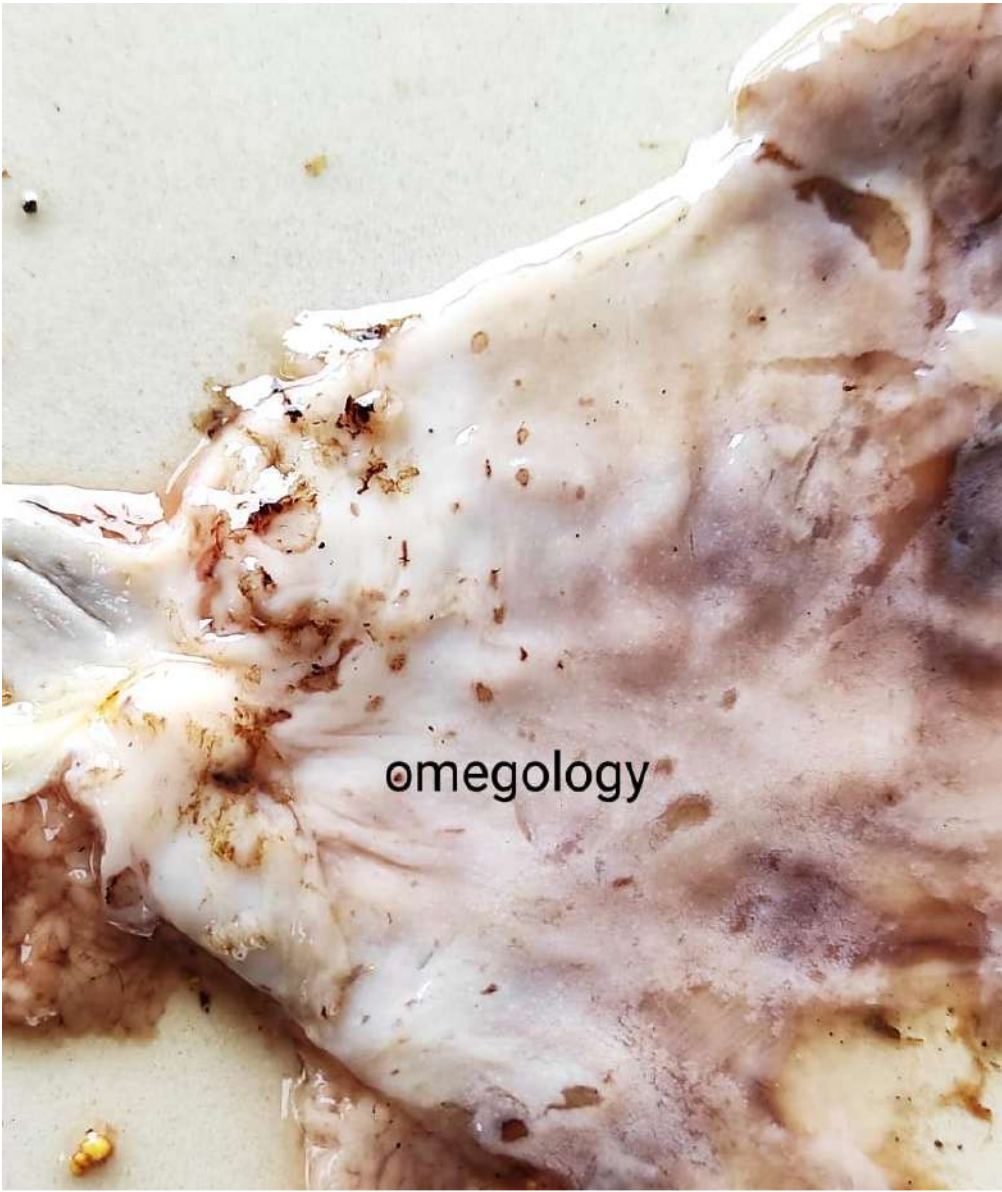
Ruptured vesicles on ruminal groove



Ruptured vesicles on ruminal groove and tongue



Ruptured vesicles on ruminal wall and groove



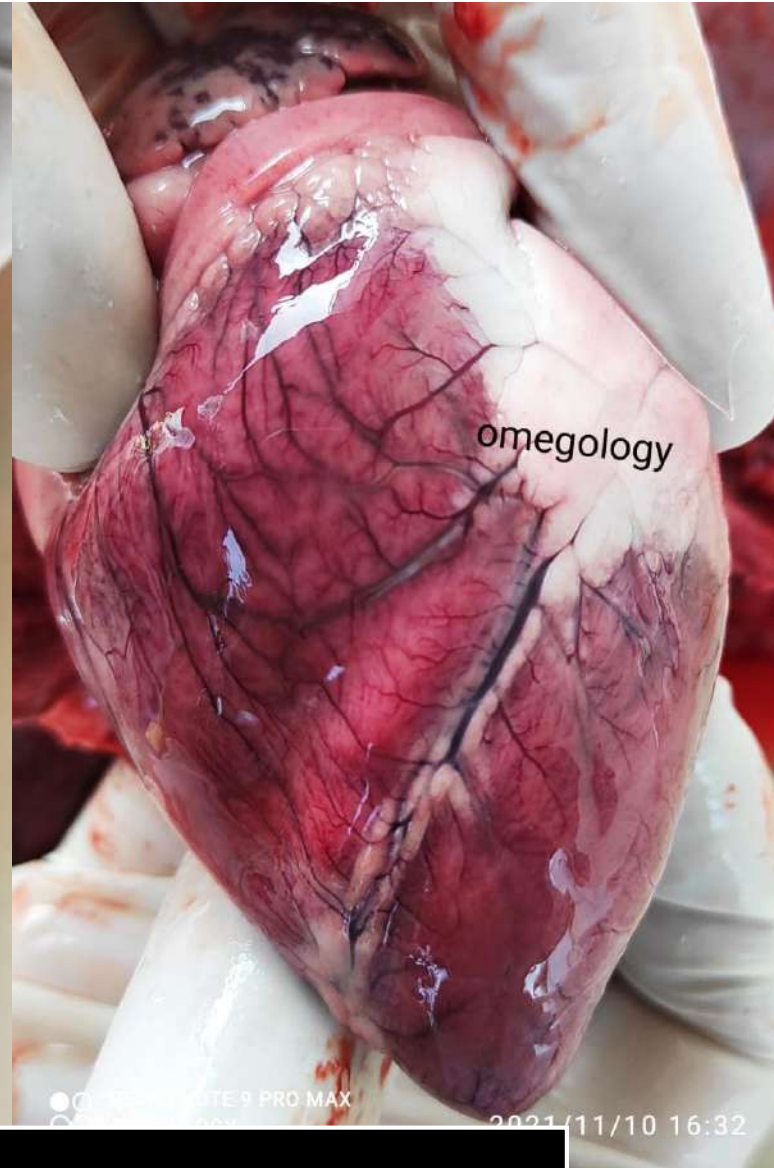
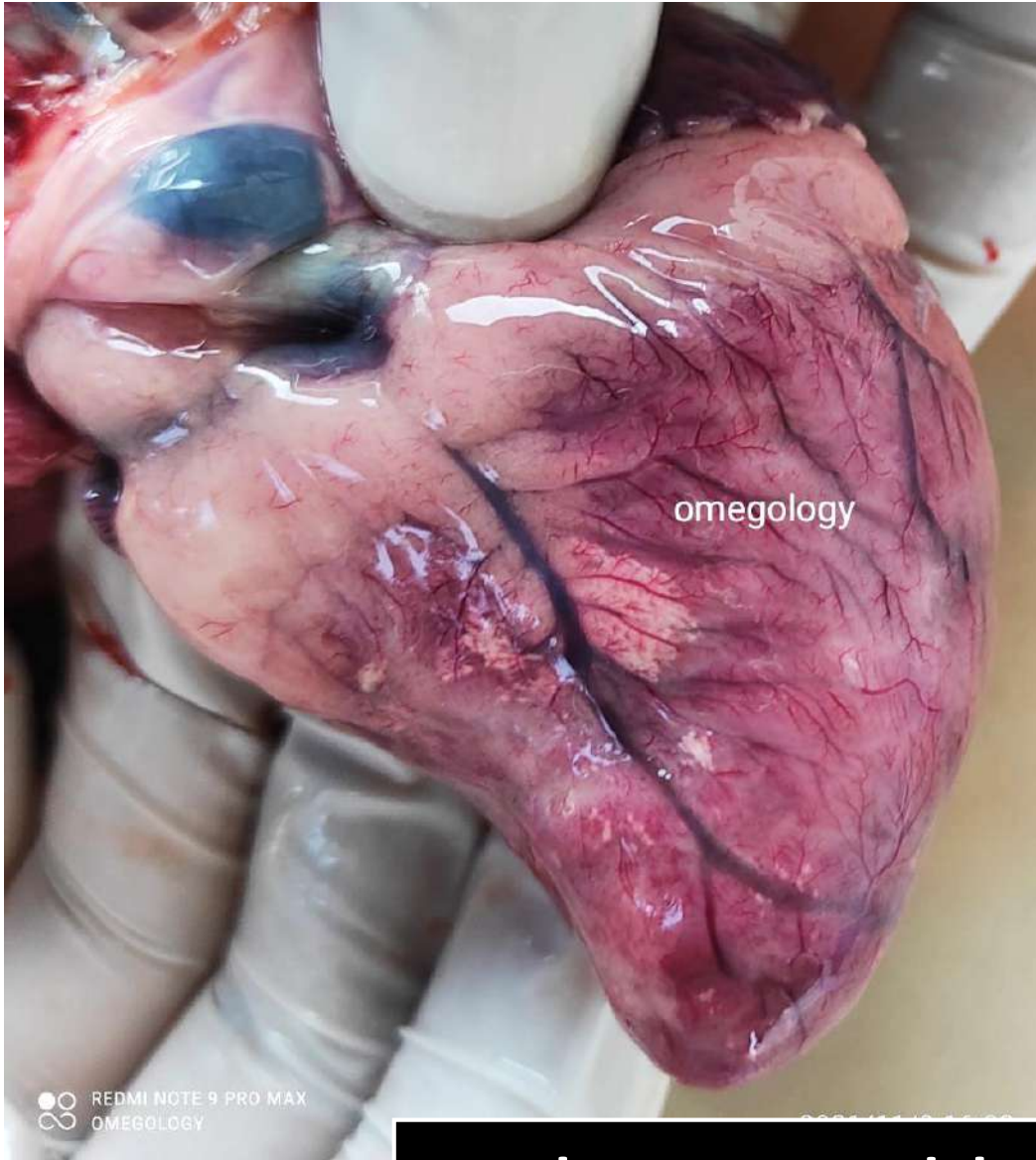
Ruptured vesicles on ruminal groove & abomasum



Tigroid heart

Tigroid heart

omegology



Early Tigroid heart

FMD



Pox oral lesions



Pox



Pox



Pox trachea



Pox - lung



Pox – kidney



Protozoal

- Theileria- tick born infection, anemia, fever, melena, coughing, jaundice, enlargement of lymphnodes.
- Babesia – tick born infection , red / coffee colored urine, fever, if not treated within time death occur
- Anaplasma – progressive fever, jaundice

- Coccidia – extremely dangerous , oro-fecal contamination (poorly managed farm), anemia, wasting, diarrhoea,
- Balantidium – water born infection, intermittent diarrhoea

Theileria Sheep & Goat



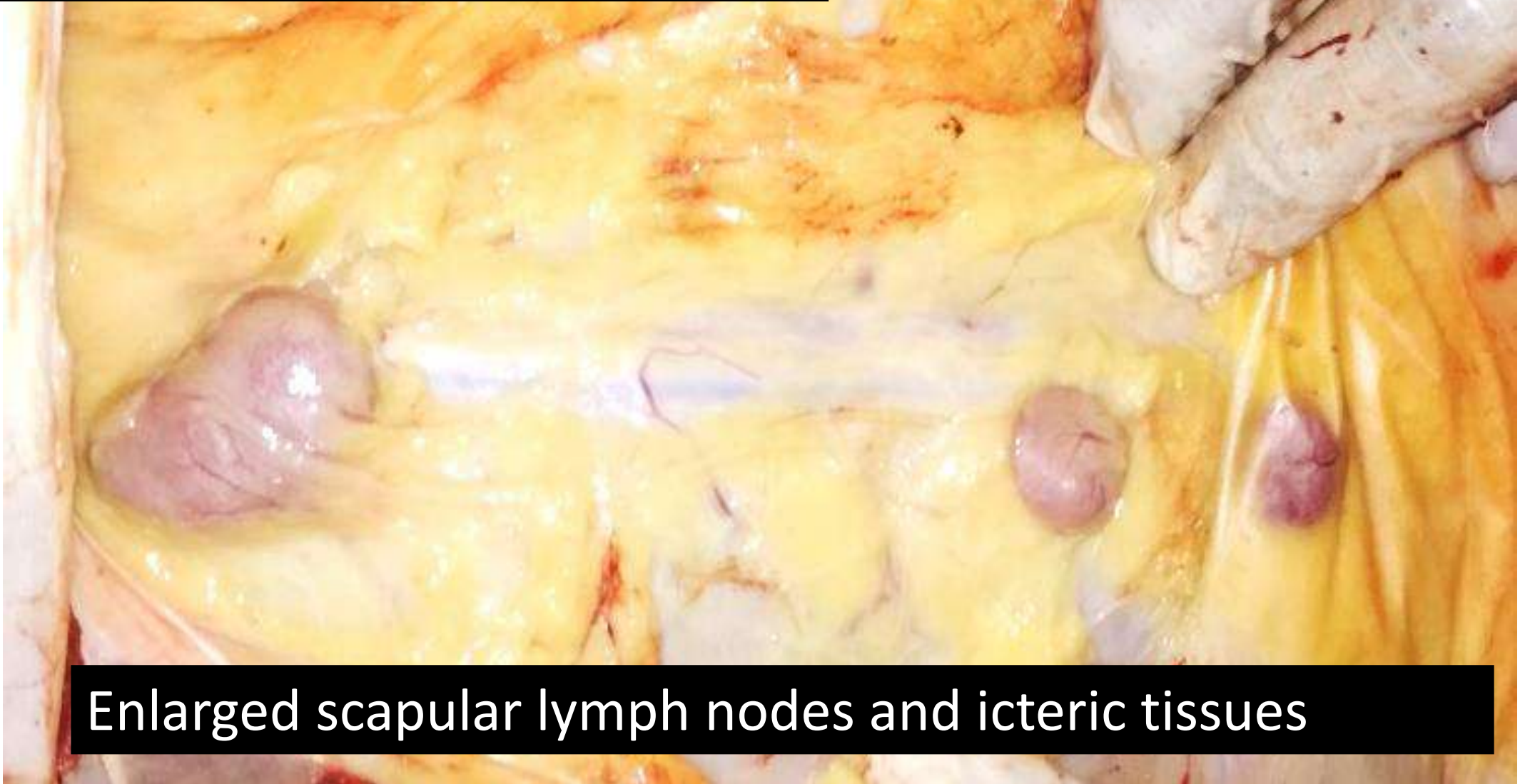
Theileria Sheep & Goat



Icteric adipose tissues

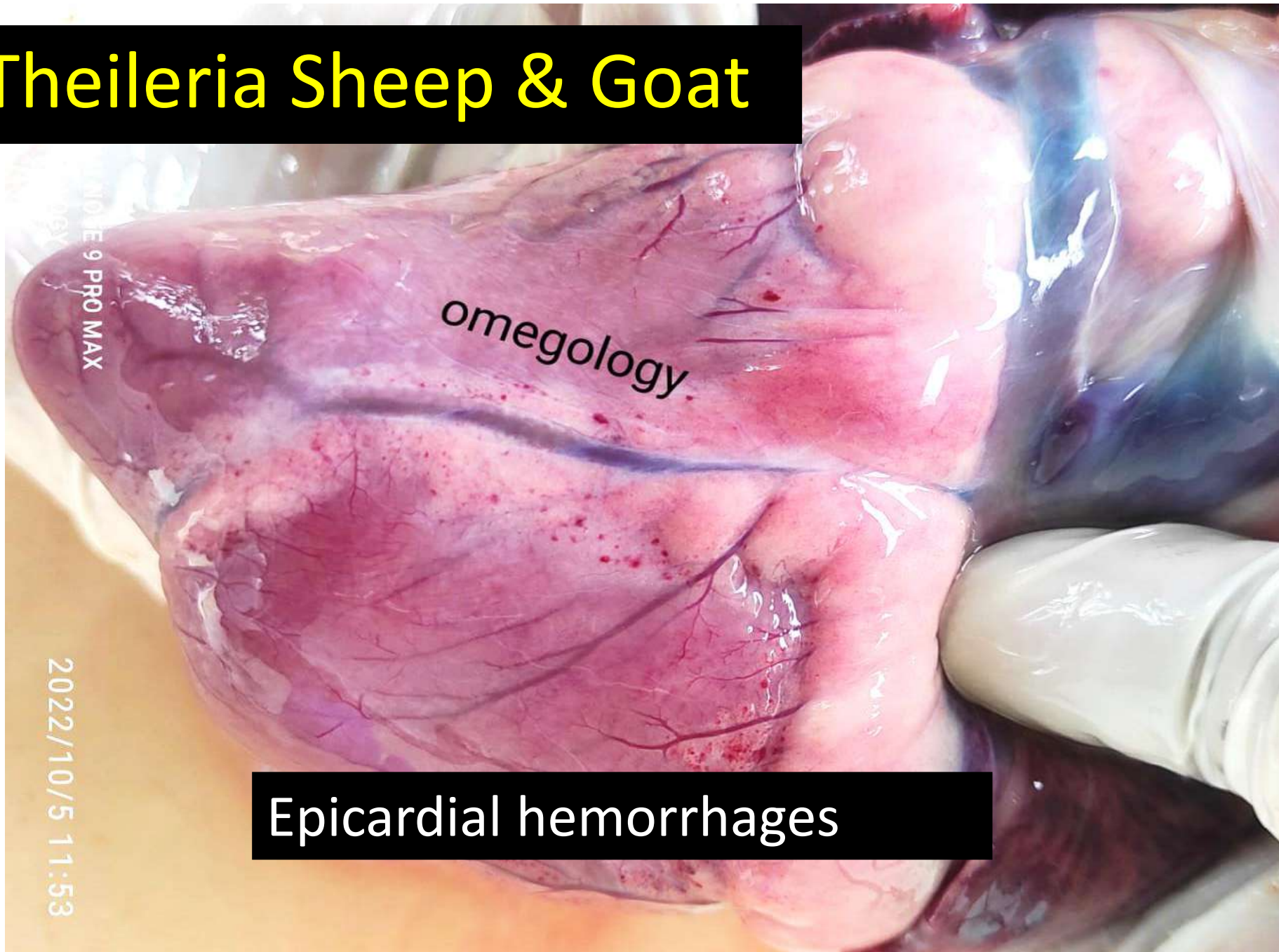
2018-7-28 14:34

Theileria Sheep & Goat



Enlarged scapular lymph nodes and icteric tissues

Theileria Sheep & Goat



Epicardial hemorrhages

2022/10/5 11:53

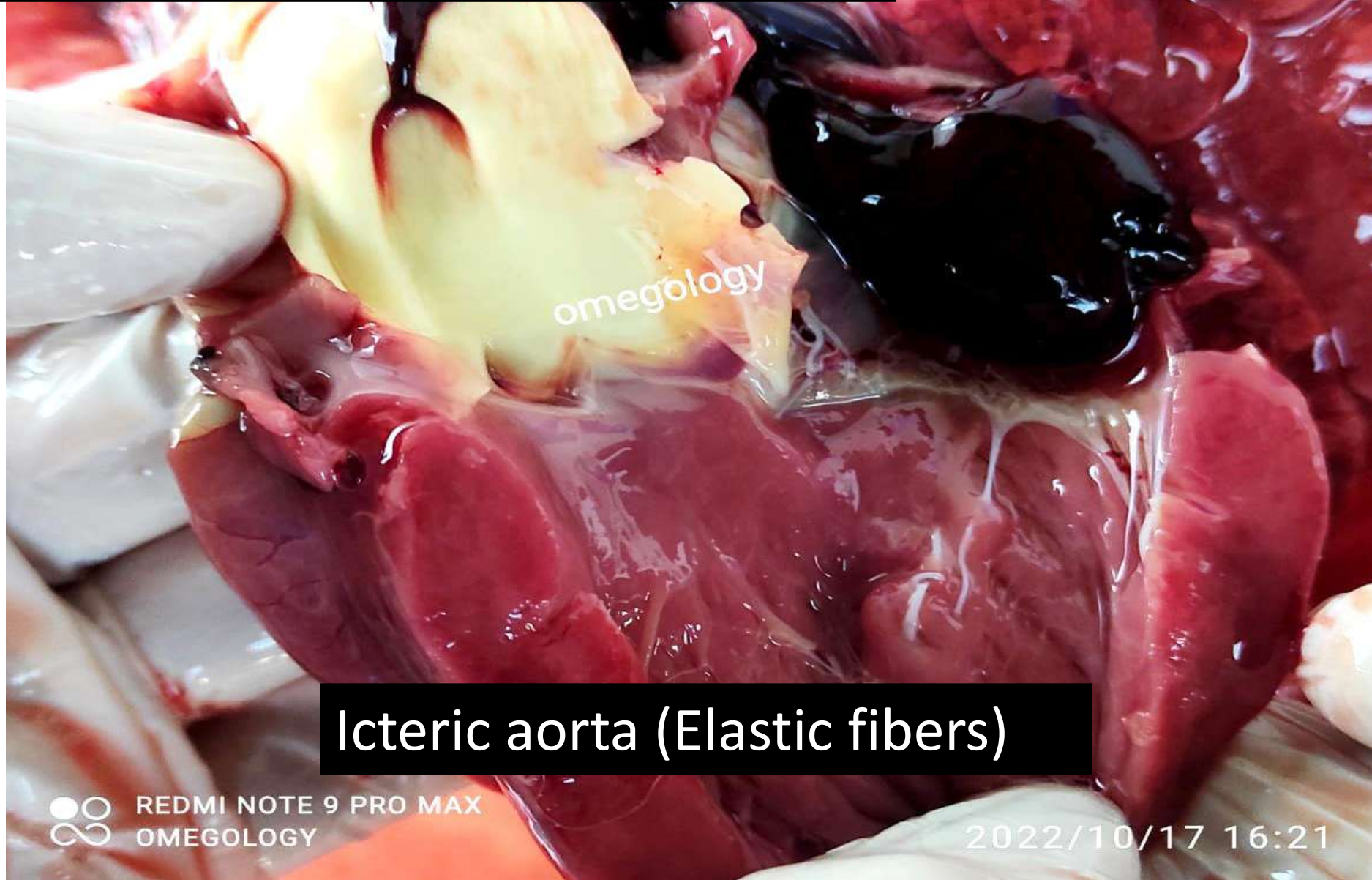
NOTE 9 PRO MAX

Theileria Sheep & Goat



Endocardial hemorrhages

Theileria Sheep & Goat



Icteric aorta (Elastic fibers)



REDMI NOTE 9 PRO MAX
OMEGOLOGY

2022/10/17 16:21

Theileria Sheep & Goat

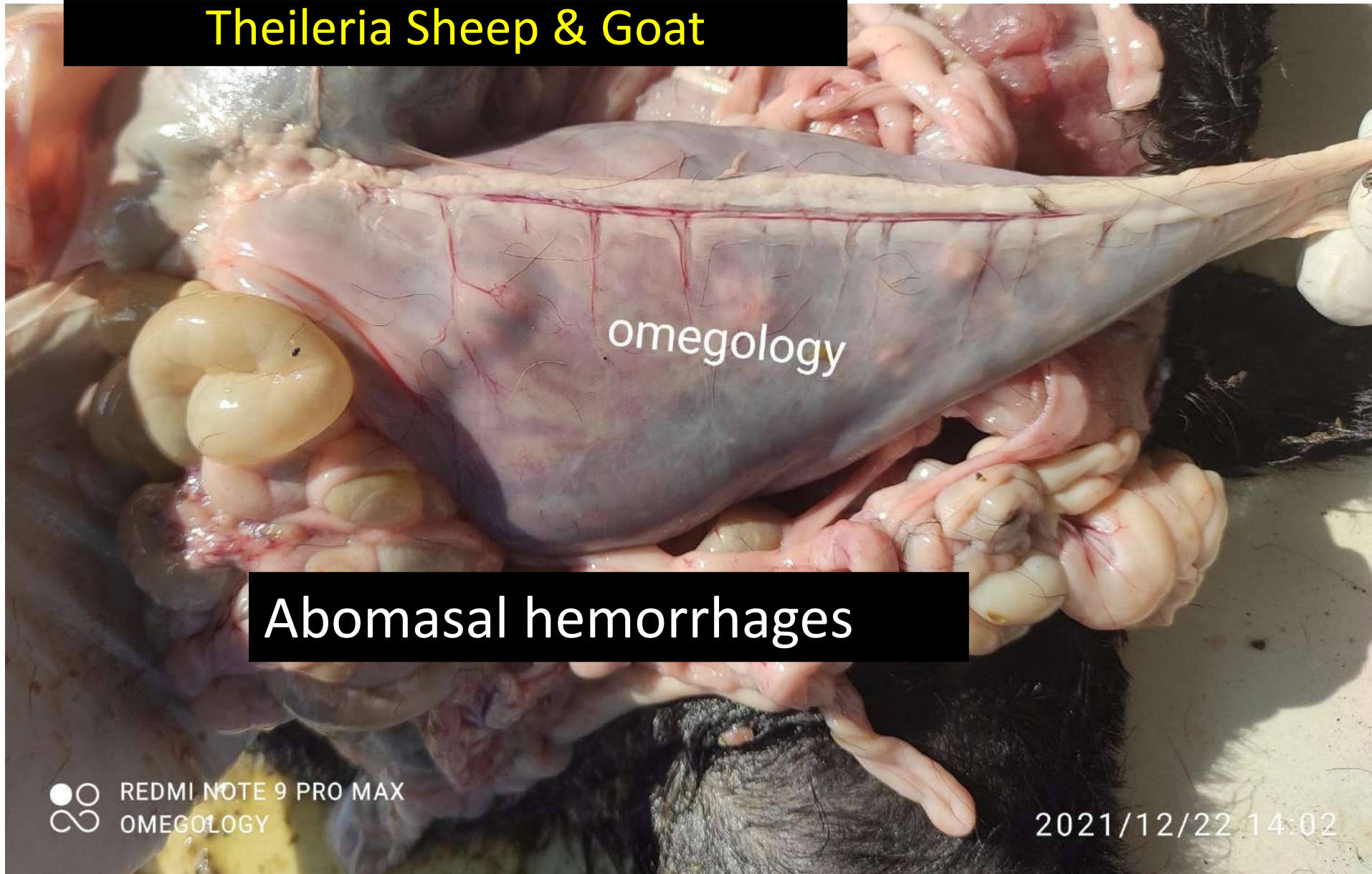


Icteric kidney (Elastic fibers)

Theileria Sheep & Goat

omegology

Abomasal hemorrhages



Theileria Sheep & Goat

omegology

Abomasal hemorrhages



Theileria Sheep & Goat



Abomasal hemorrhages and punched types of ulcers

Theileria Sheep & Goat

omegology

Abomasal hemorrhages and punched types of ulcers



Theileria Sheep & Goat



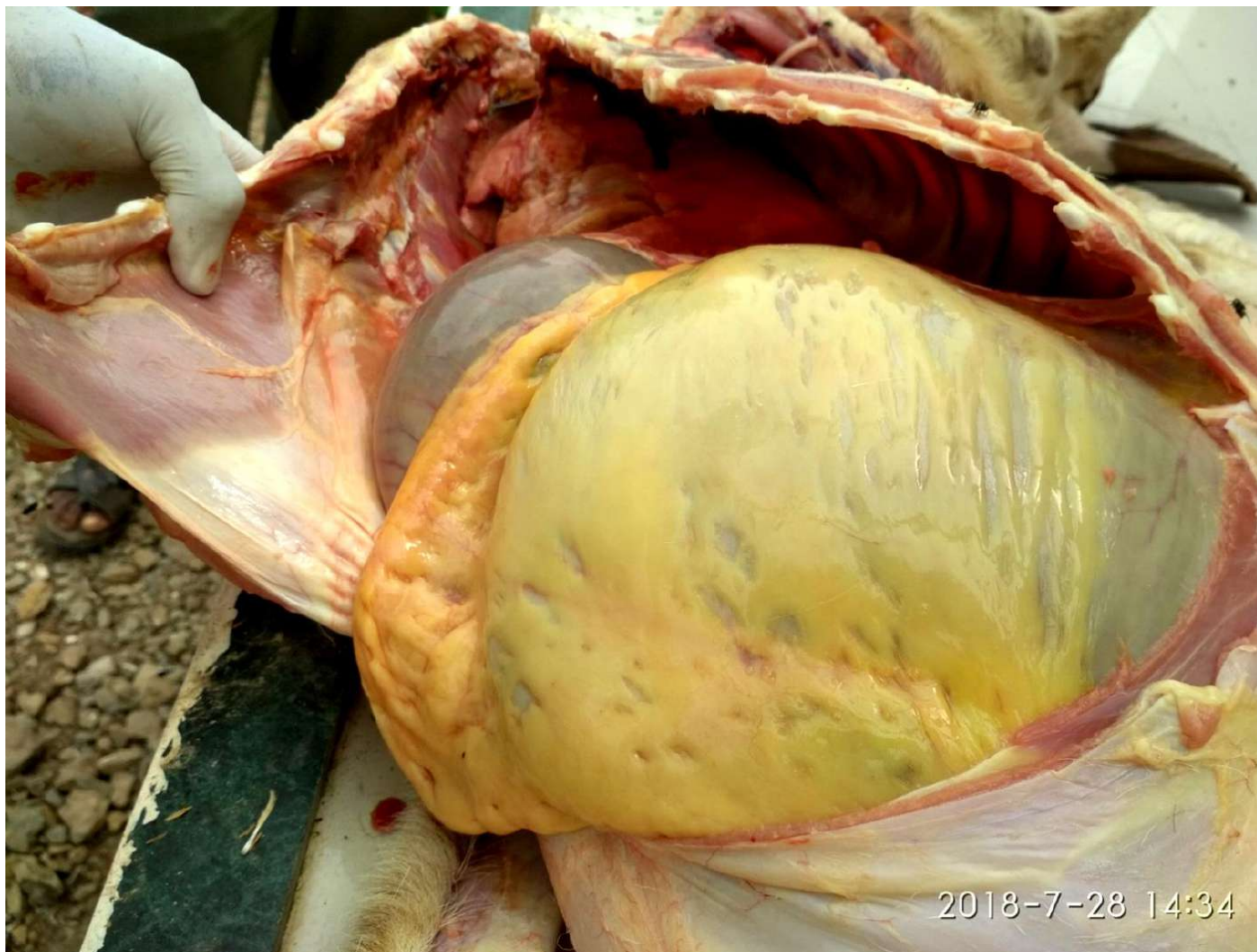
Abomasal hemorrhages and punched types of ulcers



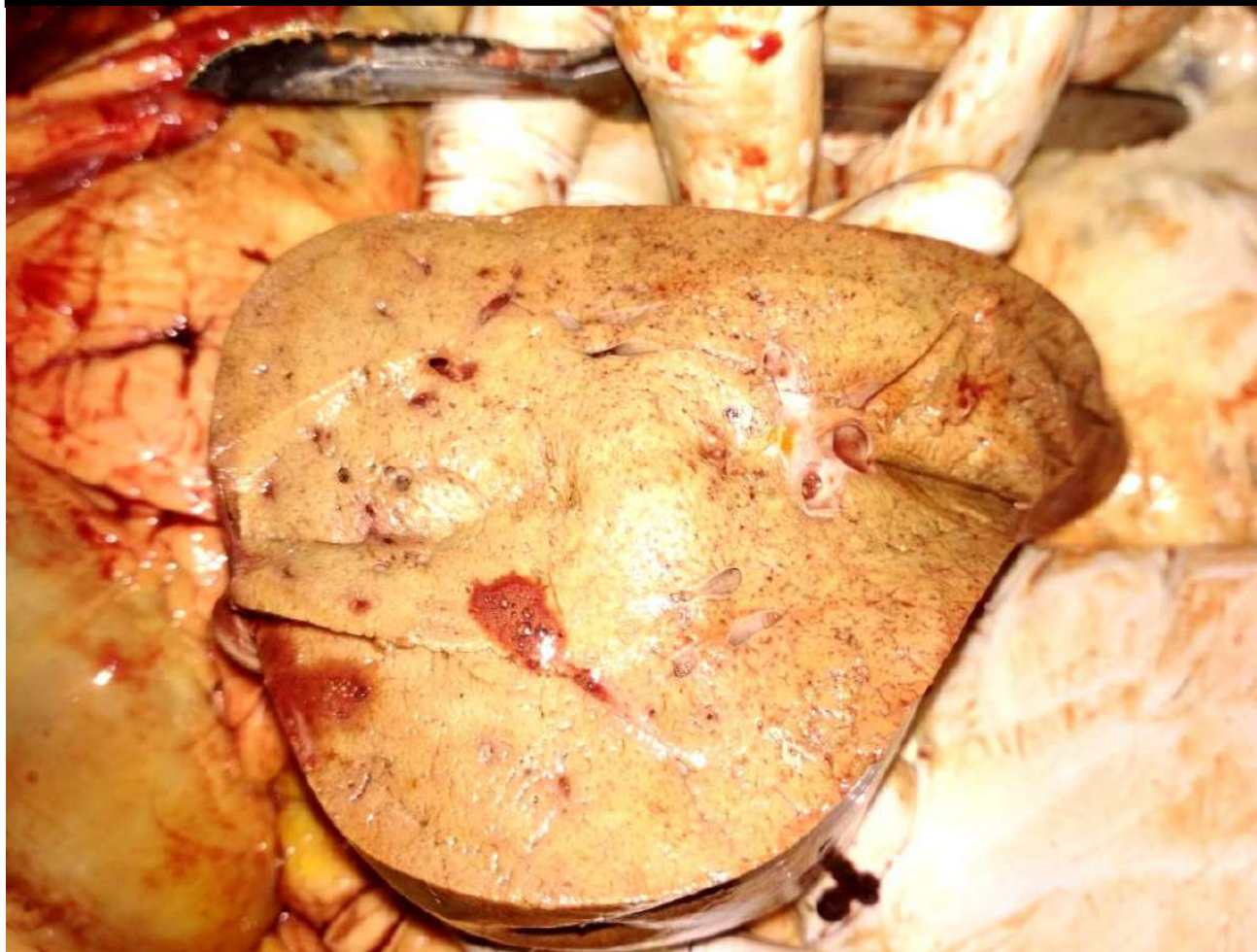
Theileria Sheep & Goat



Jaundice



Jaundice



Gall sickness

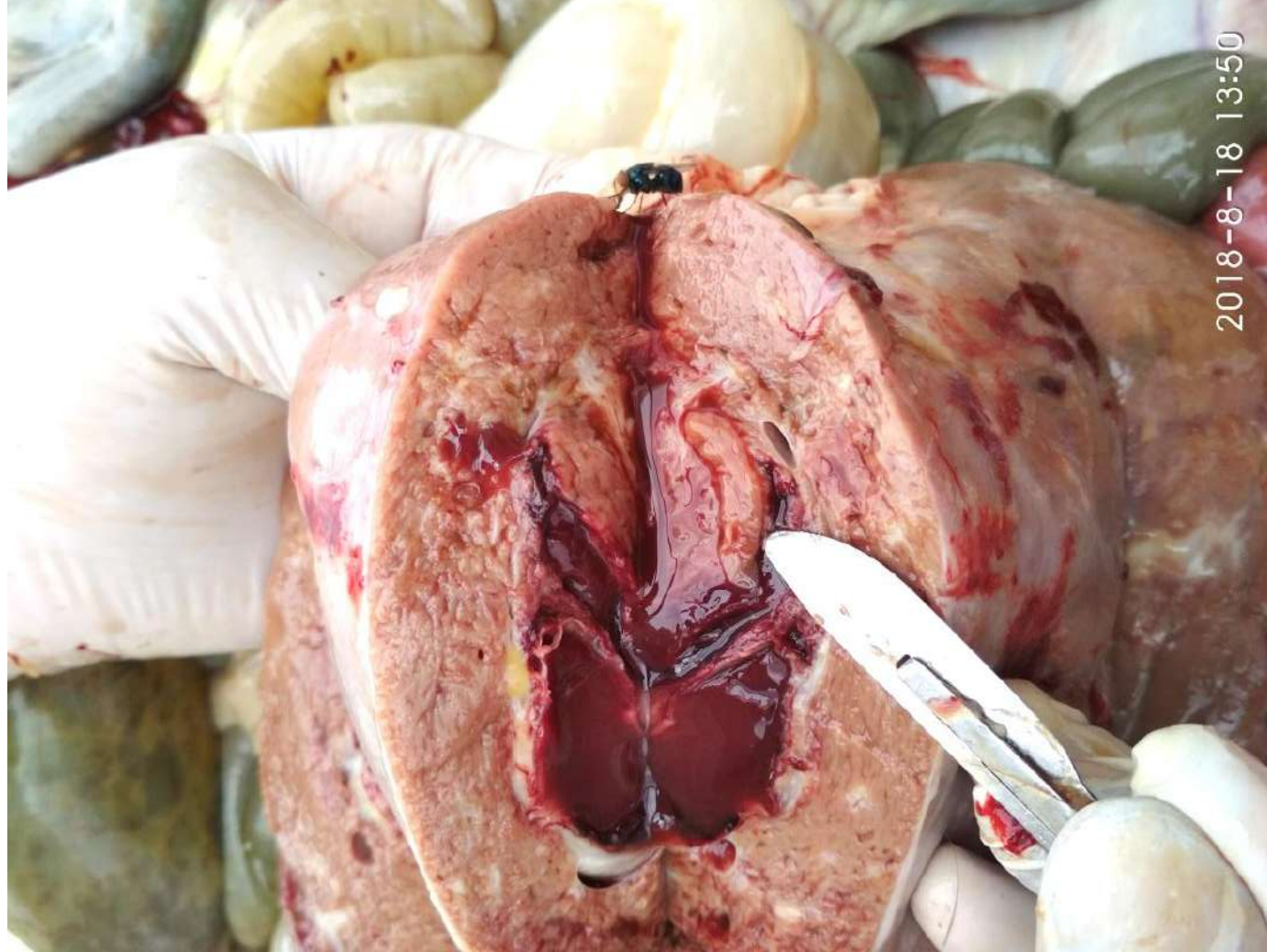


Parasitic

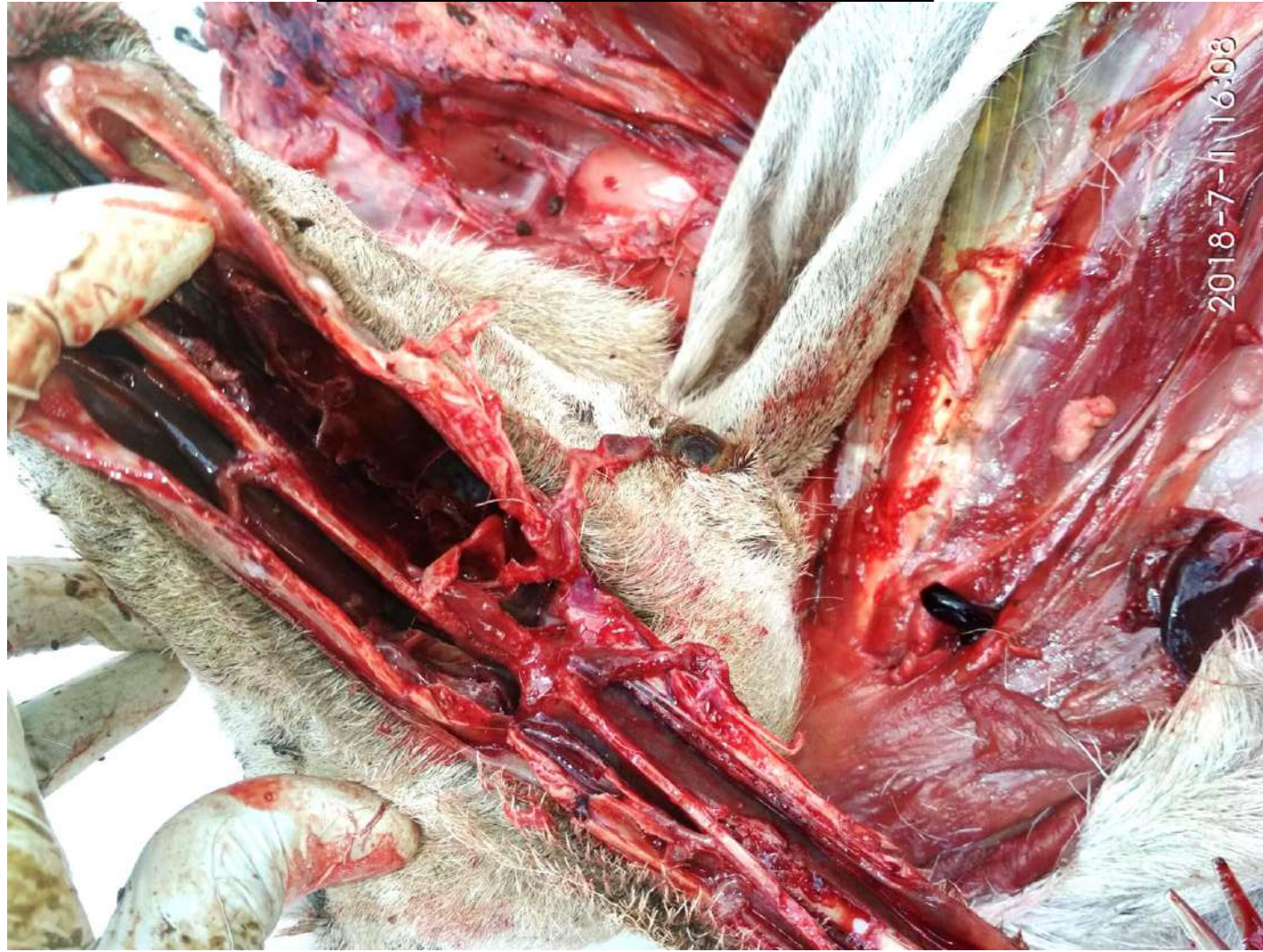
- Fasciola – immature and mature
 - Immature – sudden death due to internal bleeding
 - Mature – sub mandibular edema, ascites, diarrhoea, wasting, death
- Amphistomes – immature and mature
 - Immature – sub mandibular edema, wasting, ascites death
 - Mature- tympani, diarrhoea, death
- Round worm- pimply gut – mal absorption, wasting and death
- Tape worms – diarrhoea, wasting, anemia , immunosupresion

- Ticks – anemia and hemoprotozoal infections
- Mites – alopecia, skin quality rough, scaly, dandruff, dry skin
- Flea- restlessness in animals, weakness,
- Fly – nakadi – oestrus ovis- egg laid at nose larvae grow in sinus- nervous signs, sneezing

Fasciola



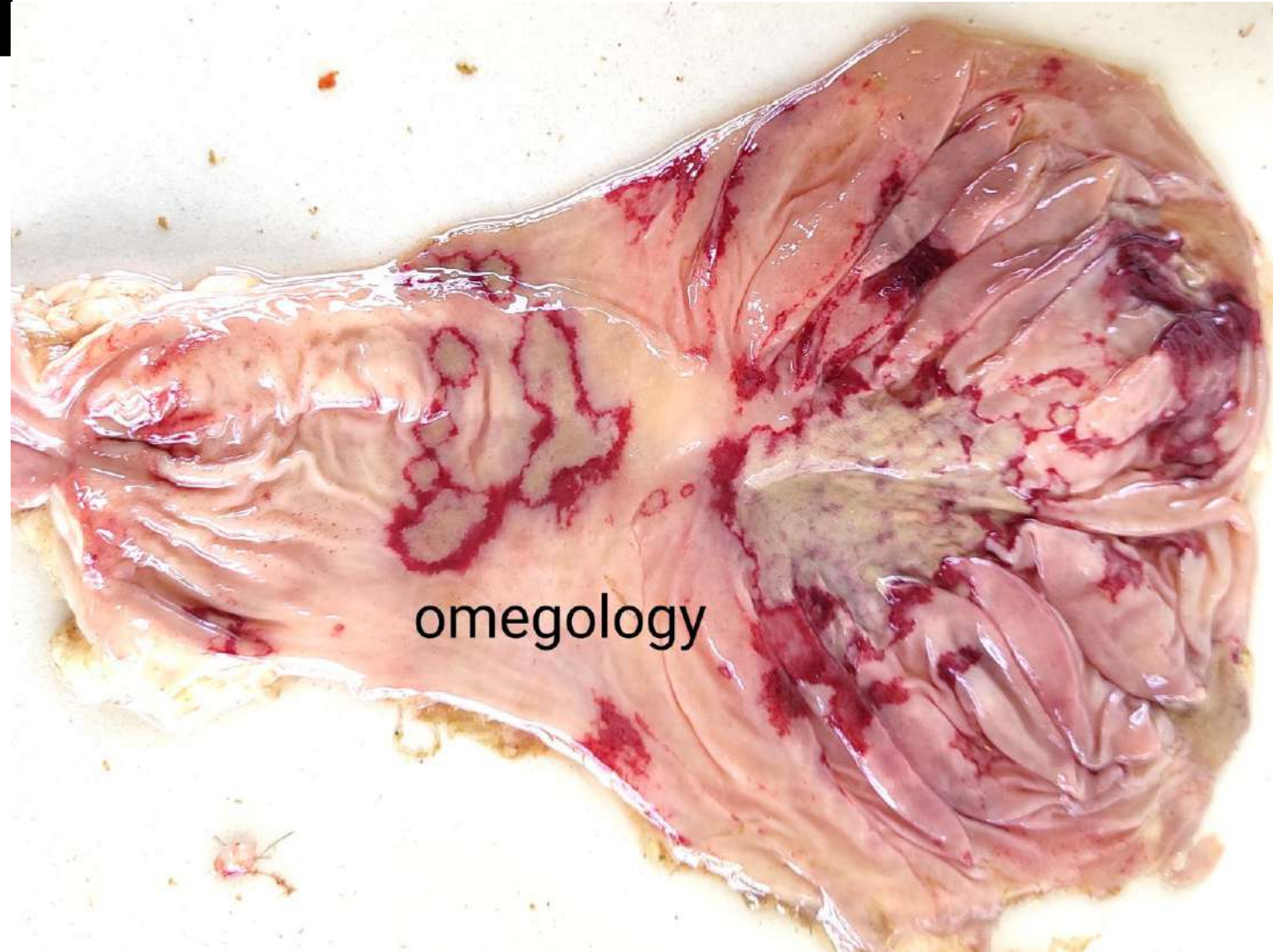
Estrus ovis



Accidental entry – estrus ovis



NSAID



omegology

Message to read

Gross lesions

Lab diagnosis

Instant diagnosis

Thank You

“Happy to answer your questions”

WhatsApp - 8600891946