



# FAECAL SCORE GUIDE

Use these faecal scoring systems to assess the stool quality of dogs, puppies and cats



## DIRECTIONS FOR USE

Score stools individually **from 1 (formed and dry) to 5 (liquid)**.  
When consistency of the stools is not homogeneous, record the higher score.

# FAECAL SCORING SYSTEM FOR DOGS



▶ Too Hard/Too Soft

▶ Acceptable

▶ Optimal

1



▶ **HARD, DRY, CRUMBLY  
STOOL**

2



▶ **DRY, VERY CLEARLY  
DEFINED CRACKS**

2.5



▶ **CLEARLY DEFINED  
SHAPE WITH VISIBLE  
CRACKS**

3



▶ **MOIST STOOL  
STARTING TO LOSE  
SHAPE AND CRACKS**

3.5



▶ **MOIST STOOL WITH  
NO CRACKS**

4



▶ **MOIST STOOL WITH  
LITTLE CONSISTENCY  
AND NO REAL SHAPE**

4.5



▶ **LIQUID STOOL WITH  
MINIMAL  
CONSISTENCY**

5



▶ **ENTIRELY LIQUID  
STOOL**

More detail on pages 2 - 5

## FAECAL SCORING SYSTEM FOR DOGS



1



### **HARD, DRY, CRUMBLY STOOL**

(crumbs) It tends to split apart rather than being crushed.

2



### **DRY, VERY CLEARLY DEFINED CRACKS**

The outside is very dry and the inside is almost dry. Leaves no residue on the ground when picked up.

## FAECAL SCORING SYSTEM FOR DOGS



2.5



### CLEARLY DEFINED SHAPE WITH VISIBLE CRACKS

It leaves very little residue on the ground when picked up.

3



### MOIST STOOL STARTING TO LOSE SHAPE AND CRACKS

This stools "components" are less separate and the cracks are still visible.

## FAECAL SCORING SYSTEM FOR DOGS



3.5



### ▶ **MOIST STOOL WITH NO CRACKS**

The stool still has a distinct shape. This stools different “components” stick to one another.

4



### ▶ **MOIST STOOL WITH LITTLE CONSISTENCY AND NO REAL SHAPE**

It holds water well. No floating “stool-water” is visible.

5

## FAECAL SCORING SYSTEM FOR DOGS



4.5



**LIQUID STOOL WITH MINIMAL  
CONSISTENCY**

5



**ENTIRELY LIQUID STOOL**  
(No texture)

# FAECAL SCORING SYSTEM FOR SMALL & MEDIUM PUPPIES



▶ Too Hard/Too Soft

▶ Acceptable

▶ Optimal

1



▶ **FORMED, DRY AND  
HARD FAECES**

2



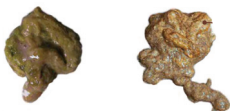
▶ **FORMED DRY BUT  
NOT HARD FAECES**  
▶ **SOFTER ONES ARE  
SLIGHTLY STICKY**

2.5



▶ **SOFT FORMED  
FAECES**

3



▶ **SOFT UNFORMED  
FAECES**

4



▶ **SOFT UNFORMED  
FAECES**

4.5



▶ **LIQUID FAECES  
ASSOCIATED WITH  
SOFT FAECES**

5



▶ **LIQUID FAECES**

More detail on pages 7 - 9

## FAECAL SCORING SYSTEM FOR SMALL & MEDIUM PUPPIES



1



**FORMED, DRY AND HARD FAECES**

2



**FORMED, DRY BUT NOT HARD FAECES**

Cylindrical shape faeces, dry appearance, separated in pellets. Harder ones can be deformed with some difficulty (fig. II) or more easily (fig. III).

**SOFTER ONES ARE SLIGHTLY STICKY**

(fig. IV)



## FAECAL SCORING SYSTEM FOR SMALL & MEDIUM PUPPIES



2.5



### SOFT FORMED FAECES

Formed but very soft faeces. Cylindrical shape separated in pellets (fig. V) or with presence of stria (fig. VI). Softer ones are pasty, still cylindrical in shape but no stria (fig. VIII).

3



4



IF 7 WEEKS OLD OR LESS

VIII IX X

IF 8 WEEKS OLD OR MORE

VIII IX X

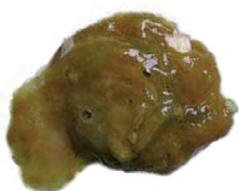
### SOFT UNFORMED FAECES

Faeces mainly unformed with a small formed part (fig. VIII) or pasty unformed faeces (fig. IX & X). In some cases (fig. IX) a cylindrical shape is visible (a) but is not maintained due to the high humidity.

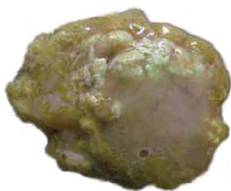
## FAECAL SCORING SYSTEM FOR SMALL & MEDIUM PUPPIES



4.5



XI



XII

### LIQUID FAECES ASSOCIATED WITH SOFT FAECES

The main part of the faeces is represented by soft (fig. XI) or liquid (fig. XII) faeces.

5



### LIQUID FAECES

# FAECAL SCORING SYSTEM FOR LARGE & GIANT PUPPIES



▶ **Too Hard/Too Soft**

▶ **Acceptable**

▶ **Optimal**

1



▶ **FORMED, DRY AND  
HARD FAECES**

2



▶ **FORMED DRY BUT  
NOT HARD FAECES**  
▶ **SOFTER ONES ARE  
SLIGHTLY STICKY**

2.5



▶ **SOFT FORMED  
FAECES**

3



▶ **SOFT UNFORMED  
FAECES**

4



▶ **SOFT UNFORMED  
FAECES**

4.5



▶ **LIQUID FAECES  
ASSOCIATED WITH  
SOFT FAECES**

5



▶ **LIQUID FAECES**

More detail on pages 11 - 13

## FAECAL SCORING SYSTEM FOR LARGE & GIANT PUPPIES



1



**FORMED, DRY AND HARD FAECES**

2



**FORMED, DRY BUT NOT HARD FAECES**

Cylindrical shape faeces, dry appearance, separated in pellets. Harder ones can be deformed with some difficulty (fig. II) or more easily (fig. III).

**SOFTER ONES ARE SLIGHTLY STICKY**  
(fig. IV)

## FAECAL SCORING SYSTEM FOR LARGE & GIANT PUPPIES



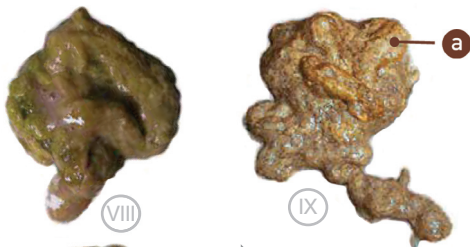
2.5



### SOFT FORMED FAECES

Formed but very soft faeces. Cylindrical shape separated in pellets (fig. V) or with presence of stria (fig. VI). Softer ones are pasty, still cylindrical in shape but no stria (fig. VIII).

3



4



IF 7 WEEKS OLD OR LESS

VIII IX X

IF 8 WEEKS OLD OR MORE

VIII IX X

### SOFT UNFORMED FAECES

Faeces mainly unformed with a small formed part (fig. VIII) or pasty unformed faeces (fig. IX & X). In some cases (fig. IX) a cylindrical shape is visible (a) but is not maintained due to the high humidity.

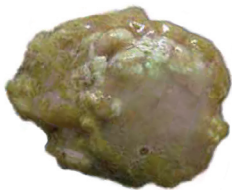
## FAECAL SCORING SYSTEM FOR LARGE & GIANT PUPPIES



4.5



XI



XII

### LIQUID FAECES ASSOCIATED WITH SOFT FAECES

The main part of the faeces is represented by soft (fig. XI) or liquid (fig. XII) faeces.

5



### LIQUID FAECES

## FAECAL SCORING SYSTEM FOR CATS



▶ **Too Hard/Too Soft**

▶ **Acceptable**

▶ **Optimal**

1



▶ **HARD, DRY,  
CRUMBLY STOOL**

2



▶ **FORMED HARD STOOL**

2.5



▶ **FORMED, FIRM STOOL**

3



▶ **UNFORMED STOOL,  
SOFT BUT WITH SOME  
SHAPE**

4



▶ **VERY SOFT STOOL**

5



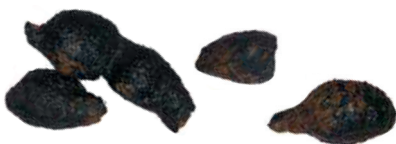
▶ **LIQUID STOOL**

More detail on pages 15 - 17

## FAECAL SCORING SYSTEM FOR CATS



1



### **HARD, DRY, CRUMBLY STOOL**

(crumbs)

Crushing the stool leaves no mark. It tends to split apart rather than being crushed.

2



### **FORMED, HARD STOOL**

This stool has clearly defined cracks. The outside is very dry and the inside is almost dry (unlike the **score 2.5** stool, which is softer). When pressure is put on the stool, separate small pieces break off along the cracks. Leaves no residue on the ground when picked up.



## FAECAL SCORING SYSTEM FOR CATS



2.5



### FORMED, FIRM STOOL

This stool has a clearly defined shape with visible cracks. It's surface may be slightly damp but is still well formed.

When pressure is applied the stool is crushed, although you will feel some resistance, unlike the **score 3** stool.

It leaves very little residue on the ground when picked up.

3



### UNFORMED STOOL, SOFT BUT WITH SOME SHAPE

A moist stool with no cracks.

It still has a distinct shape when compared to the **score 4** stool. This stool's different "components" stick to one another.

Leaves residue on the ground when picked up.

## FAECAL SCORING SYSTEM FOR CATS



4



### VERY SOFT STOOL

Very wet, but not liquid stool. When compared to the **score 5** stool, this stool retains the water that is nevertheless visible between its different constituent parts.

5



### LIQUID STOOL

Entirely liquid stool (no texture) or liquid stool with minimal consistency.



# MAKE EVERY MOUTHFUL COUNT



Tailored nutritional solutions to support cats and dogs with digestive disorders and during critical care